

Annual Report 2023

Fostering partnership in environment conservation



*Inspiring personal responsibility in conservation
of the Kingdom's environment since 1987*

STATEMENT FROM OUR PATRON



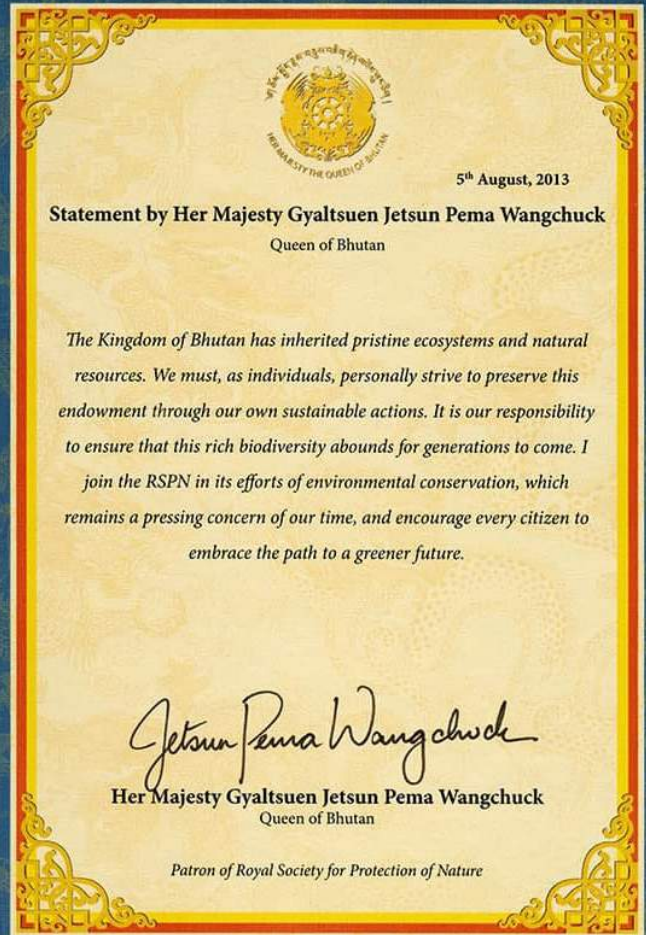
༄༅། ། རྒྱལ་གཞུང་འང་བཞིན་སྲུང་སྐྱོབ་ཚོགས་པ།
Under the Royal Patronage of HRH the Crown Prince of the Kingdom of Bhutan

14/3/13

“The kingdom of Bhutan is blessed with an exceptional and largely intact natural environment. I have joined RSPN in its mission to raise awareness of the challenge that faces us now. We must all accept our individual responsibility to conserve the rich diversity of Bhutan’s plant and animal species, for the benefit of both the natural world and our children’s future.”

His Royal Highness DASHO JIGME KHEGAR NAMGYAL WANGCHUCK
the Crown Prince of Bhutan, Royal Patron of RSPN

Royal Society for the Protection of Nature (RSPN) Post Box 0325 Thimphu, Kingdom of Bhutan
Telephone: +975-2-322056 / 326130 Fax: +975-2-323189 Email: rsn@druknet.net.bt



White-bellied Heron (Ardea insignis)



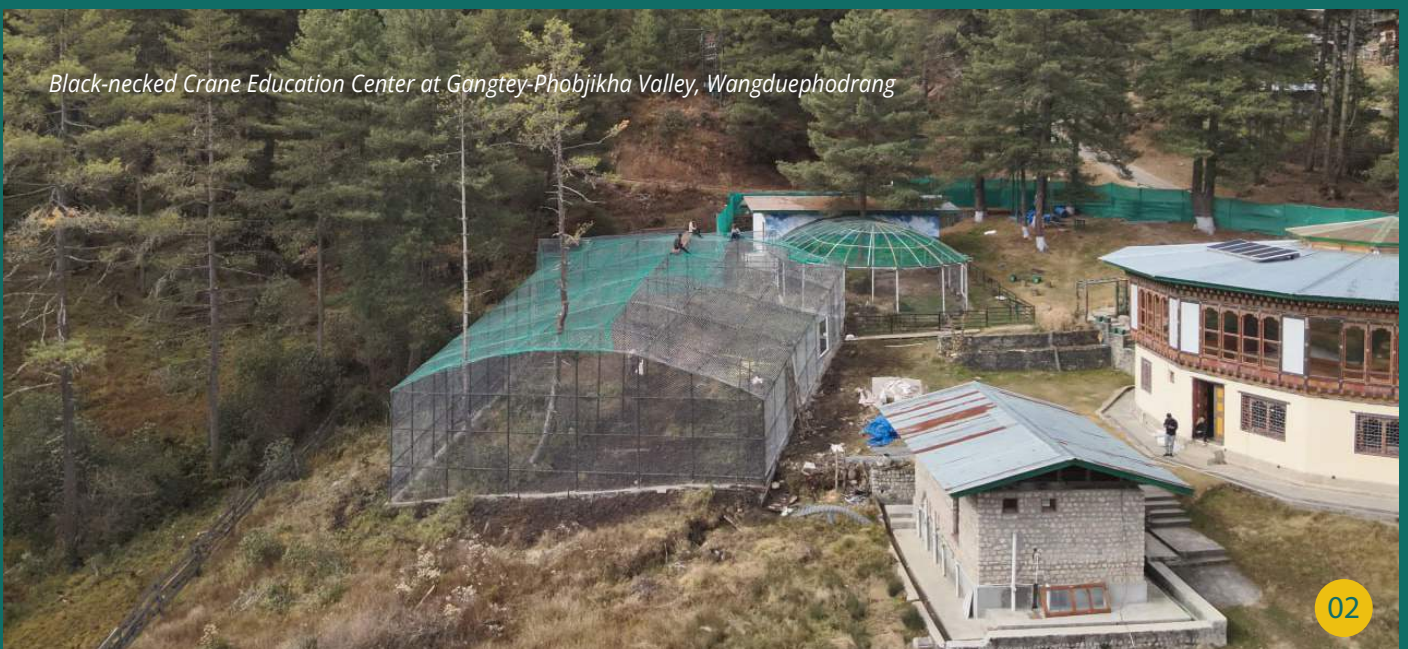
Black-necked Crane (Grus nigricollis)



TABLE OF CONTENTS

Message from our Patron	Pg.01
Message from Chairperson	Pg.03
Who we are? What we do?	Pg.04
Thematic areas-Key Achievement	Pg.05
Project Implemented for 2023	Pg.14
Financial summary for 2023	Pg.15
Donors and partners	Pg.17
Our Philantropists	Pg.17
Message from Executive Director	Pg.18

Black-necked Crane Education Center at Gangtey-Phobjikha Valley, Wangduephodrang



MESSAGE FROM THE CHAIRPERSON



Since 1987, the Royal Society for Protection of Nature (RSPN) has been at the forefront in safeguarding the environment. RSPN has scaled up and strengthened its conservation efforts each year in response to the needs of the times. In the year 2023, RSPN achieved a significant milestone in the preservation of biodiversity, the advancement of climate action and the enhancement of sustainable livelihoods interventions.

The commitment in strengthening conservation efforts for RSPN's two flagship species, the White-bellied Heron and the Black-necked Crane is evident with the successfully construction

of additional aviaries for the White-bellied heron breeding program and extended aviaries for Crane Pema and Crane Karma at the Black-necked Crane Education Center, Wangdue Phodrang District. Furthermore, RSPN restore degraded habitat of WBH and BNC ecosystems as part of our climate response.

In line with our dedication to climate action, RSPN became a Delivery Partner to the Green Climate Fund(GCF). This partnership had enabled us to secure the GCF Readiness grant for climate projects with the support of the National Designated Authority. These climate projects, which will be implemented starting in 2024, represent a significant step forward in our efforts to combat climate change.

RSPN has been dedicated to enhancing the livelihood activities of rural communities. Through initiatives such as the Rural Water Supply Scheme and capacity building in Climate-Smart Agriculture practices, we have made tangible contributions to improving the livies of those in rural areas. We have also explored alternative livelihood options such as community-based ecotourism, futher demonstrating our commitment to sustainable development.

As we reflect on these achievements, let us renew our commitment to the environment, biodiversity, and the well-being of communities. Our journey continues, and together, we can make a meaningful impact on environmental conservation and sustainable development, and I look forward to continuing this journey with your unwavering support.

Tashi Delek!

(Phub Dorji)

WHO WE ARE?

ABOUT US

RSPN was established in 1987 under the Royal Command of His Majesty The Fourth King of Bhutan as a citizen based Non-Governmental Organization (NGO) devoted to the conservation of the Kingdom's environment.

His Majesty The King was the Royal Patron of RSPN from 1999 to 2012. Her Majesty The Queen of Bhutan is the Royal Patron. RSPN is managed by a seven-Board Directors, the Executive Director is the head of the organization.

CORE VALUES

- » Promote innovative technologies and methods.
- » Be proactive towards environmental issues.
- » Be accountable and transparent.
- » Be efficient and effective in delivering programs and services.

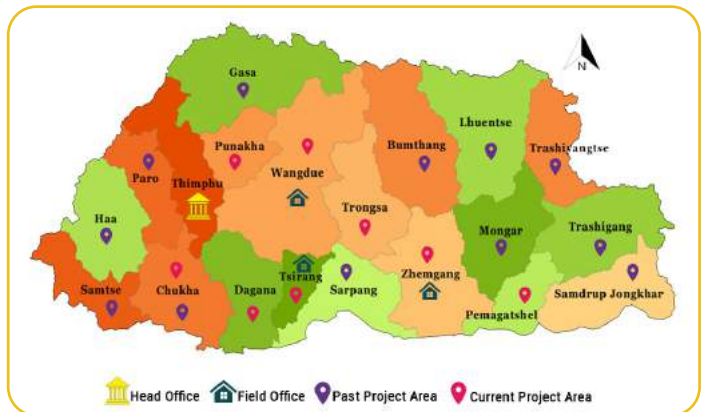
VISION

To be the Leader in Conservation ensuring future generations of Bhutan live in an Environmentally Sustainable Society.

MISSION

To inspire personal responsibility and active involvement of people of Bhutan in the conservation of the Kingdom's environment through, Education, Community Engagemet and Sustainable Livelihood Opportunities.

WHERE WE ARE



WHAT WE DO?

The mandala represents our systemic approach and efforts, geared to implement sustainable solutions to emerging environmental challenges through, innovation, citizen engagement, education, and empowerment. The six thematic areas are initiated based on national and international priorities that are aligned to address the Sustainable Development Goals (SDGs).

Using this approach, it affirms our belief and commitment to addressing the global issues which are interdependent and connected in nature.



THEMATIC AREAS- KEY ACHIEVEMENTS



SPECIES AND HABITAT

For the past three decades, RSPN has been actively involved in diverse efforts aimed at conserving different species and their habitats. This includes our primary flagship species, Critically Endangered White-bellied Heron (WBH) and the Near Threatened Black-necked Crane (BNC). Our approach involves conduct of intensified research projects, implementation of ex-situ conservation methods, restoration of habitats, community conservation engagement and the adoption of ecosystem-based solutions in-line to the specific needs of species and habitat preservation in collaboration with relevant stakeholders and partners nationally and globally.

The Species and Habitat conservation projects are supported by:

1. Asian Species Action Partnership, Singapore
2. BMUV-IKI, Germany
3. Foundation Hans Wilsdorf, Switzerland
4. Fondation Segre, Switzerland
5. Hong Kong Bird Watching Society
6. International Crane Foundation (ICF), USA
7. Keidanren Nature Conservation Fund (KNCF), Japan
8. MAVA Foundation, Switzerland
9. NABU, Germany
10. Punatsangchhu Hydroelectric Project Authority (I & II), Bhutan
11. Rufford Foundation, UK
12. Synchronicity Earth, London

1. BLACK-NECKED CRANE



Conducted BNC Annual Population Survey and **recorded 677 individuals**. There is **an increase of 12%** compared to 2022 year count (599 individuals).



Restored 25 acres of degraded paddy fields mainly damaged by flood at Bumdeling wetland area in Trashiyangtse District. This intervention contribute towards enhancement of livelihood and also support foraging ground for Cranes.



Published research findings on 'BNC Dietary Composition' in collaboration with the Department of Forest and Park Services (DoFPS).



Extended BNC Aviary at Black-necked Crane Education Center (BNCEC) Gangtey-Phobjikha, Wangdue Phodrang District to provide additional space for Cranes.

2. WHITE-BELLIED HERON



Conducted WBH Annual Population Survey and recorded **27 individuals**. There is **an increase of 11%** compared to 2022 count (24 individuals).



New habitat inventories of WBH carried in lower Wangchhu river basin, Chhukha District



Recorded three active WBH nests in the country. The potential WBH nesting sites were also explored.



Trained new LCSG members for conservation of WBH



Constructed two additional aviaries at White-bellied Heron Conservation Center (WBHCC), Chachey, Tsirang District, as a part of the ex-situ conservation enhancement program.



Established WBH Information and Education Unit and opened to the public. A total of **484 visitors** (65 international and 204 national) were recorded.



Restoration of degraded paddy field at Bumdeling, Trashiyangtse District



Restored 17 hectares of degraded WBH habitats along Punatsangchhu and Mangdechhu basins through plantation.



Developed WBH Habitat Restoration Guidelines in collaboration with relevant stakeholders.



WBH Information and Education Unit, Chachey, Tsirang District



Trained 62 Local Conservation Support Group (50 male and 12 female) members for conservation of WBH.



Carried out new WBH habitat inventories in Lower Wangchhu river basin and recorded two WBH individuals.



Carried out Socio-economic survey in the communities within WBH landscape of Lower Wangchhu river basin for strategizing future conservation and livelihood activities.



ENVIRONMENTAL EDUCATION

RSPN places a high priority on Environmental Education, aligning with both the core mandates of environment curriculum in the country and global goals. The organization recognizes that Environmental Education is pivotal in fostering awareness and comprehension on the significance of biodiversity and ecosystem.

Environmental Education enables people to actively participate in conversation and influence decision-making processes by disseminating knowledge about sustainable practices and the effects of human behavior on the environment. In addition, RSPN ensures that environmental responsibility is instilled from a young age, through the means of initiating various environmental interventions.

All the Environmental Education programs are supported by:

1. Asian Species Action Partnership, Singapore
2. Bhutan Foundation
3. GEF-SGP, UNDP Bhutan

Engaged 314 participants (215 male and 99 female) (local community members and youth) for WBH awareness and advocacy program in Chhukha and Dagana Districts.



Organized Partnership for Enhanced Engagement in Research (PEER) Bhutan Research Symposium on multidisciplinary topics such as *Biodiversity, Water, Climate Change, Agriculture and Health* in collaboration with Bhutan Foundation.



Disseminated Environmental Education to the visitors of our centers and recorded **18,984 visitors** (BNCEC-18,500 visitors and WBHCC- 484 visitors).



Imparted Environmental Education to **921 youth** through internship opportunities, membership programs and environment-related events.





WASTE & POLLUTION

In Bhutan, pollution and waste management is a concern issue, especially in the country's rapidly urbanizing and populated areas. Urbanization, shifting purchasing power, and the expansion of industry are some of the reasons that have made these issues more visible in recent years. Consequently, there has been an increase in pollution in the water bodies, which puts the preservation of a pristine environment at risk.

As a part of its campaigns to increase public awareness of pollution and trash management, RSPN adopted and advocated for Chubachhu stream in 2017 in collaboration with the National Environment Commission, Bhutan Red Cross Society, Thimphu Thromde and Clean Bhutan.

All the Waste and Pollution programs are supported by:

1. Bhutan for Life
2. Bhutan Trust Fund for Environmental Conservation (BT FEC)
3. World Wild Life Bhutan

Conducted cleaning campaign of the Chubachu stream during World Water Day (March 22nd). A total of **132 volunteers** from offices residing along the Chubachu stream participated and collected 2667 Kilograms of soild waste.



Participants cleaned Chubachhu stream, Thimphu District



Conducted Chubachhu cleaning campaign to mark World Water Day



SUSTAINABLE LIVELIHOODS

Most of the local communities are subsistence farmers depending on surrounding natural resources for living. The coexistence between nature and people is essential to achieve nature conservation. RSPN initiates various integrated approaches such as nature-based solution which will address improve ecosystem, species conservation and sustainable livelihood. One of the major focus has been engaging local community participation and engagement in the management of the rich natural resources.

This engagement would empower local communities and build a sense of ownership in sustainably managing their environment. The livelihood program focuses on community-based eco-tourism including Climate-smart Agriculture (CSA) which would provide alternative economic and employment opportunities. Community-based eco-tourism intervention includes development of village homestay and ecotourism products like nature trails, eco-camp/camp sites that provide sustainable livelihoods opportunities to the local communities.

CSA intervention includes promotion of high-value horticulture and forestry crops, organic farming, fish farming, poultry, piggery, Rural water supply scheme and sustainable land management which will make farmers adaptive and resilient to climate change. Further emphasis is given on group farming and building capacity of local communities including youth and women groups on climate-smart agriculture and alternative economic opportunities.

The Livelihood projects are supported by:

1. Bhutan Foundation
2. BMUV-IKI, Germany
3. Canada Fund for Local Initiatives
4. Christopher Hunt, USA
5. GCF-SGP, UNDP Bhutan



Developed Group Management Guideline and Marketing Plan for Jigmechu Ecotourism Group, Chhukha District.



Trained and organized a PEER learning and knowledge sharing trip for **12 youth (12 male and 2 female)** of Jigmechhu on Ecotourism Management and its activities in Zhemgang District.



Developed Community-based Eco-tourism Group Management Guidelines for four eco-tourism groups in Punatsangchhu and Mangdechhu basins.



Constructed one Eco Lodge for Jigmechu Ecotourism group, Chhukha District.



Developed four campsites and nature trails with basic amenities in four Districts (Dagana, Tsirang, Punakha and Zhemgang).



Conducted capacity building on marketing for **46 local community members (29 male and 17 female)** including existing youth and Women Self-help groups in Mangdechhu and Punatsangchhu.



Developed Conservation Management Plan for Star Anise (spice) in collaboration with Jomotsangkha Wildlife Sanctuary for local communities of Lauri Gewog, Samdrup Jongkhar District.



Supported 62 households in establishment of Village Homestay on cost-sharing bases in Punatsangchhu and Mangdechhu basins.



Conducted capacity building on marketing for 46 local community members



Conducted Homestay Management training



Installation and testing of electric fencing by Agricultural Extension Officer and Local Government team in Kewana Tshachuphu Chiwog, Punakha District



Supported two-units of visitor's toilet with attached bathroom at Tree-house campsite in Jigmechhu, Chukha District.



Supported 55 Kilometer of electric fencing and benefitted 219 households in the Punatsangchhu and Mangdechhu basins.



Conducted training on HWC Group Management and Crop Compensation Schemes in 10 sites along the Punatsangchhu and Mangdechhu basins.



Supported 605 numbers of soft-shell walnut sapling and 76,640 slips of napier grasses in **30 acres** of farmland as a part of Sustainable Land Management and Agroforestry practices and benefitted **177 households** of Lauri and Momring villages under Lauri Gewog, Samdrup Jongkhar District.



Trained 66 potential homestay owners on Homestay Management in six Districts (Punakha, Wangdue Phodrang, Tsirang, Trongsa, and Zhemgang) and two homestays were certified by Department of Tourism.



Supported 15 sets of solar dryers for drying vegetables, and 25 milking cans and containers to two farmer groups in Lauri Gewog, Samdrup Jongkhar District.



WETLANDS & FRESHWATER

Wetlands and freshwater habitats in Bhutan are threatened by invasive species, pollution and waste disposal, habitat loss, and the effects of climate change. The loss of watersheds and forest cover has resulted in drying up of spring water sources and raising concerns on consistent supply of water for both agriculture and drinking purposes.

The continued efforts in community participation and advocacy and knowledge sharing programs on wetland conservation are necessary to address the growing concerns. With the collective support from the local communities and relevant stakeholders, the Annual roost maintenance of Black-necked Crane in Gangtey-Phobjikha was carried out and field activities to revive the lake were also initiated in Lauri gewog, eastern Bhutan. The study on Wetland Management was published to understand the wetland ecology in Gangtey-Phobjikha valleys.

The Wetlands and Freshwater conservation projects are supported by:
1. Christopher Hunt Jebba, USA
2. GEF-Small Grants Programme, UNDP Bhutan



Rolled out Rural Water Supply Schemes (RWSS) covering 12 Chiwogs in four Districts (Punakha, Wangdue Phodrang, Trongsa and Zhemgang).



Supported RWSS to 28 households including two Ecotourism campsites at Jigmechhu, Chhukha District.



Conducted advocacy and knowledge-sharing programs on wetland conservation, climate change, and community engagement for 54 local community members residing around Peling Tsho, Dechheling Gewog, Pemagatshel District.



Initiate the revivable of the dried lake in Lauri village covering 77 decimal which will benefit 177 households.



Conducted Annual Roost/ habitat maintenance of Black-necked Crane at Gangtey Phobjikha, Wangdue Phodrang, to maintain habitat for the BNC.



Conducted annual maintenance of the BNC habitat at Gangtey Phobjikha, Wangdue Phodrang District



Rolled out Rural Water Supply Scheme in Wangdue Phodrang District



CLIMATE CHANGE ADAPTATION & RESILIENCE

Climate Change is impacting the rural communities significantly which constitutes the majority of Bhutanese population, posing challenges especially to their livelihoods and economic well-being. Recognizing this growing issue, RSPN has initiated multiple integrated nature-based solutions and climate-adaptation interventions with an aim to build local communities' resilience to climate change while at the same time enhancing their livelihood opportunities. Some of the climate change projects initiated include Climate-smart Agriculture practices, Watershed management and water supply, organic farming, pest and diseased management, post-harvest practices and capacity building across sectors and local governments. These initiatives have not only paid-off in increasing communities' resilience to climate change, but it has also empowered them by providing alternative economic and employment opportunities.

The year 2023 marked yet another landmark towards sustainable development and safe planet as it embarked on developing partnership and goodwill with the international climate finance falling within the purview of UNFCCC. RSPN became the Country's first Civil Society Organization Delivery Partner (DP) for GCF (Green Climate Fund) and it is currently implementing a GCF readiness project as the DP.

Recognizing the country's high vulnerability to climate induced disasters, importance of financial resources and merit of direct access modality, RSPN had also begun the accreditation process with Adaptation Fund and GCF.

The projects implemented under Climate Change Adaptation and Resilience are supported by the following donors:

1. BMUV-IKI, Germany
2. Canada Fund for Local Initiatives
3. Foundation Hans Wilsdorf, Switzerland
4. GCF, South Korea
5. GEF-Small Grants Programme, UNDP Bhutan

GCF has **endorsed** RSPN as **Delivery Partner** and has approved country allocation of Readiness Grant with support from Ministry of Finance (National Designated Authority) to GCF .



Accreditation to (AF) under process with AF Secretariat with support from Ministry of Finance (National Designated Authority) to GCF.



Participated in the **28th Conference of Parties (COP)** and presented the works of RSPN in Bhutan's Pavilion.



Meeting between the officials of RSPN and Green Climate Fund Secretariat was held during the COP28 side event, Dubai



Coordinated the capacity-building of 17 Civil Society Organizations in implementing Climate related projects with the funding support from GCF Readiness project.



Promoted CSA practices in Punatsangchhu and Mangdechhu basins:
11 CSA sites were identified and supported with **green-net** for nursery development and benefited 300 households.



Supported 15 varieties of vegetable seeds and four varieties of cash crops (cardamom, potato, mustard and wheat) to farmers in 11 CSA sites for self-consumption and income generation.



Coordinated Training of Trainers (ToT) to 11 Agriculture Extension Officers on Post-harvest techniques, Pest Management, Organic Farming and Water Management. Through this TOT program 399 local communities members were trained.



Supported 15 varieties of vegetable seeds in Athang Gewog, WangduePhodang, District



Coordinated the capacity-building program for Civil Society Organizations in Haa District



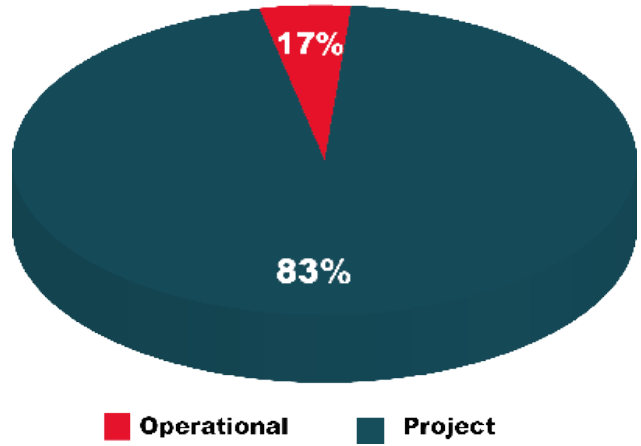
PROJECT PROFILE 2023

Sl. No	Project Title	Donor	Total Approved Grant (Nu)	Approved Budget for 2023 (Nu)
01.	Developing Ecosystem-based solution for Managing Biodiversity Landscape in Bhutan.	BMUV/IKI, Germany	353,460,000.00	115,198,021.35
02.	White-bellied Heron (WBH) Conservation Center Operational Fund.	MAVA Foundation, Switzerland	22,355,023.89	10,645,889.40
03.	WBH - Aviary construction	Suntory Fund for Bird Conservation, Japan	1,204,073.67	993,573.67
04.	WBH - Conservation	International Conservation Fund of Canada	1,634,400.00	1,142,772.48
05.	WBH - Aviary construction	Synchronicity Earth, London	6,114,654.96	6,114,654.96
06.	WBH - Aviary construction	Philanthropic (Dominic and Din Thi Hoa/ Jonathan)	8,059,208.62	8,059,208.62
07.	WBH- Aviary construction	Tokyo Zoological Park Society, Japan	550,388.73	550,388.73
08.	WBH- Conservation- ASAP	ASAP Conservation, Singapore	839,448.03	839,448.03
09.	White-bellied Heron Conservation (Exchange visit)	India Bhutan Foundation	500,000.00	500,000.00
10.	Black-necked Crane (BNC) Conservation Project-Year 3, Gr. VI	International Crane Foundation, USA	2,796,920.00	1,935,545.00
11.	BNC Aviary Extension	Dasho Ugyen Tshechap	823,681.00	823,681.00
12.	HKBWS Asian Conservation Fund	Hong Kong Bird Watching Society	166,753.20	116,753.20
13.	Enhancing Climate Resilience of the Marginalized Communities of Lauri Geowg, Bhutan to the Impact of Climate Change	Canadian Foundation - Canada Fund for Local Initiatives (CFLI)	2,574,200.00	1,837,012.00
14.	Enhancing Increase Climate Resilient through Gender Responsive Argo-Ecological Farming, Provision of Agricultural Tools and Developing Marketing linkages in Zhemgang District	Canadian Foundation - Canada Fund for Local Initiatives (CFLI)	850,649.60	903,796.82
15.	Development and Promotion of Community-based Ecotourism at Jigmechhu	Bhutan Foundation	1,242,835.00	731,539.88
16.	Development of Adequate and Safe Drinking Water Supply System at Jigmechhu	Christopher Hunt	836,917.56	836,917.56
17.	Hot Water bathing Facility to student of Lingzhi Lower Secondary School, Thimphu	Christopher Hunt	2,475,082.44	1,673,909.00
18.	Improving Peling - tsho and Agriculture through Community-based Conservation Approaches in Dechheling, Nanglam	GEF-SGP, UNDP Bhutan	2,881,647.53	1,873,832.53
19.	Green Climate Fund-Readiness	National Designated Authority, Ministry of Finance	4,000,000.00	4,000,000.00
21.	Understanding Carnivore Community Ecology to reduce Dhole Prediction to Livestock in Bhutan	Segre Foundation, Switzerland	6,031,600.00	3,578,457.00
22.	Threats and mitigation study of WBH	Rufford foundation	554,326.83	554,326.83
23.	Diversity & Conservation challenges of Bryophytes in Merak & Sakten Gewogs	Rufford foundation	441,160.00	441,160.00
Total approved grant in (Nu)			419,906,194.86	
Total budget implemented in 2023 (Nu)				163,350,884.06

FINANCIAL SUMMARY FOR THE CALENDAR YEAR 2023

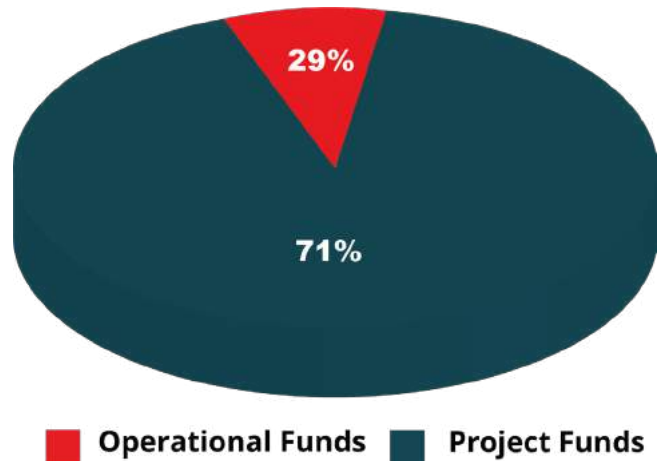
BUDGET PROPOSED

Operational	Nu	35,720,991.22
Project	Nu	168,543,206.27
Total Budget	Nu	204,264,197.49



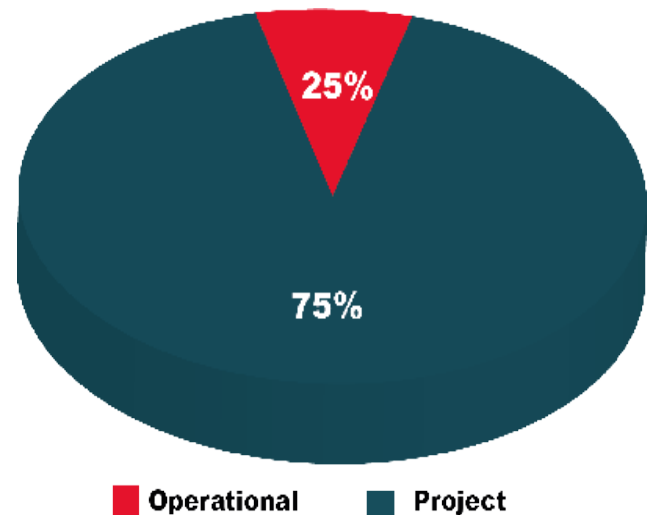
BUDGET RECEIPT

Operational Funds	Nu	67,716,072.47
Project Funds	Nu	165,913,343.37
Total Receipt	Nu	233,529,415.84



EXPENSES

Operational	Nu	52,877,447.15
Project	Nu	161,006,795.37
Total Expenses	Nu	213,884,242.52



**ROYAL SOCIETY FOR PROTECTION OF NATURE
UN-AUDITED RECEIPT AND PAYMENT STATEMENT
from 1st January to 31st December, 2023**

RECEIPT	Schedule	Amount (Nu.)	Amount (USD)	PAYMENT	Schedule	Amount (Nu.)	Amount (USD)
1. Opening Balances:				1. Expenditure- Direct			
Cash-in-Hand		-	59.50	a. Operational Expenses	3	51,285,927.67	30,000.00
Cash at Bank - OPERATION		2,673,716.29	143,729.22	b. Project Expenses	4	145,931,543.99	
Cash at Bank- BNCVC		416,473.00	-	1. Expenditure- Indirect			
Cash at Bank - IKI Project		(9,112.23)	-	a. Operational Expenses	3	1,591,519.48	
				b. Project Expenses	4	15,075,251.38	
2. Recoveries & Remittances:				2. Recoveries & Remittances:			
Recoveries & Remittances	5	8,246,427.94		Recoveries & Remittances	5	8,180,368.43	
3. Advance & Adjustment :				3. Advance & Adjustment :			
a. Advance to Employees(Salary)	6	972,500.00		a. Advance to Employees(Salary)	6	972,500.00	
b. Advance to Employee(Project)		4,835,189.50		b. Advance to Employee(Project)		4,523,150.00	
c. Advance to Party		14,786,500.15		c. Advance to Party		13,760,865.00	
d. Fuel Deposit Advance		721,672.94		d. Fuel Deposit Advance		680,000.00	
2. Revenue- Direct							
a. Operational funds	1	55,873,600.09					
b. Interest return - Onshore Investment		10,000,000.00					
c. Project Funds	2	165,309,530.28					
2. Revenue- Indirect				Closing Balances(as per Book):			
a. Operational funds	1	10,842,472.38		Cash-in-Hand			59.50
b. Project Funds	2	603,813.09		Cash at Bank - OPERATION		28,096,402.48	113,729.22
				Cash at Bank- BNCVC		5,175,255.00	-
				Cash at Bank- IKI Project		-	-
Total		275,272,783.43	143,788.72	Total		275,272,783.43	143,788.72


Tshering Dorji
Chief, Administration and Finance


Kipley Tenzin, PhD
Executive Director

DONORS AND PARTNERS

OUR PHILANTHROPISTS

DONORS



PARTNERS



We also acknowledge our **Institutional Members, international and national members** for graciously supporting to our common cause:

01. All Bhutan Connect Pvt. Ltd.
02. Amen Bhutan Tours & Treks
03. Athang Private Limited
04. Bank of Bhutan Ltd.
05. Bhutan Agro Industries Ltd.
06. Bhutan Development Bank Ltd.
07. Bhutan Birding & Heritage Travels
08. Bhutan Eco Lodges
09. Bhutan for Life
10. Bhutan Power Corporation Ltd.
11. Blue Poppy Tours & Treks
12. Druk Green Power Corporation Ltd.
13. Druk Wang Alloys Ltd.
14. Firefox Tours
15. My Bhutan
16. Natural Resources Development Corporation Ltd.
17. Norbu Bhutan Travel Pvt. Ltd.
18. Royal Insurance Corporation of Bhutan Ltd.
19. Royal Thimphu College



Dr. George Archibald
Co-Founder, ICF, USA



Dinh Thi Hoa
Vietnam



Jonathan Charles Eames, OBE, UK



Anis Abadi,
Germany



Christopher Hunt,
USA



Francois & Sheila Brutsch,
USA



Hishey Tshering & Orgyen Wangchuk Tshering
Bhutan Birding and Heritage Travels, Bhutan



Professor Satoshi Shimano
Japan



Dominic & Han Scriven,
Vietnam

Aum Dechen Jamyang, Singye Group, Bhutan

MESSAGE FROM THE EXECUTIVE DIRECTOR



Dear Friends of Nature,

The year 2023 has been a fulfilling year as we strengthen our environmental conservation. We have achieved our milestones in ecosystem management, promotion of climate actions and enhancing livelihoods. These achievements were only possible with your unwavering support and trust in our collective conservation efforts. In coming years, RSPN aspires to make a larger impact through your continued support.

I am delighted to present the annual report to all our supporters and partners nationally and globally. RSPN will keep playing a significant role in the preservation and advancement of environmental issues.

On behalf of the RSPN team, i also would like to extend our gratitude to our friends of nature for inspiring us to move ahead with integrity and commitment towards our common goal.

Tashi Delek!

Kinley Tenzin, PhD

CONTACT US

HEAD OFFICE

P.O. Box: 325,
Building No.: 25
Lhado Lam, Kawajangsa
Thimphu 11001, Bhutan
Tele: +975 2 322056/326130
Fax: +975 2 323189

BLACK-NECKED CRANE EDUCATION CENTER

Gangtey - Phobjikha
WangduePhodrang 14001, Bhutan
Tele: +975 17767330 (Officer In-Charge)

WHITE-BELLIED HERON CONSERVATION CENTER

Chachey Dovan
Tsirang 36001, Bhutan
Tele: +975 17523744 (Officer In-Charge)

CONTACT US VIA

Email: rspn@rspnbhutan.org
Web: www.rspnbhutan.org

FOLLOW US ON



White-bellied Heron Conservation Center, Chachey, Tsirang District



www.rspnbhutan.org

P.O.Box:325, Building No:25
Lhado Lam, Kawajangsa, Thimphu 11001, Bhutan
Tele: +975 2 322056/326130 | Fax: +975 2 323189
Email:rspn@rspnbhutan.org