



ANNUAL REPORT

1 July 2013 – 30 June 2014

ROYAL SOCIETY FOR PROTECTION OF NATURE



5th August, 2013

Statement by Her Majesty Gyaltsuen Jetsun Pema Wangchuck
Queen of Bhutan

The Kingdom of Bhutan has inherited pristine ecosystems and natural resources. We must, as individuals, personally strive to preserve this endowment through our own sustainable actions. It is our responsibility to ensure that this rich biodiversity abounds for generations to come. I join the RSPN in its efforts of environmental conservation, which remains a pressing concern of our time, and encourage every citizen to embrace the path to a greener future.

Her Majesty Gyaltsuen Jetsun Pema Wangchuck
Queen of Bhutan

Patron of Royal Society for Protection of Nature

CONTENTS

Message from the Chairman	I
Message from the Executive Director	II-III
RSPN - A Background	1-3
Conservation and Sustainable Livelihoods	4-24
Environmental Education and Advocacy	25-28
Species Conservation	29-30
Research Program.....	31-36
Membership Program	37-39
Financial Report	40-43
Our Supporters	44

Front-cover: *An art featuring traditional house, farmland, temporary makeshift watchtower and scarecrow. It highlights issues of human-wildlife conflict faced by majority of Bhutanese farmers.*



Message from the Chairman

Ugyen Rinzin

The year 2013-2014 was yet again a busy and productive time for the Royal Society of Protection of Nature (RSPN). Within this report, you will find the details of the various programs that RSPN has undertaken for the year in our continuing efforts for the conservation of Bhutan's pristine environment - our rich natural heritage.

RSPN works closely with conservation partners within our government, NGO's, businesses, rural communities and the general public both in rural and urban areas. Cultivating beneficial partnerships in our work is a critical component in the successful implementation of our conservation programs. The successful completion of numerous projects benefiting communities in different parts of Bhutan is an encouraging indication that Bhutan can, with persistent effort, retain its rich environmental heritage alongside rapid economic development.

Our country faces enormous environmental challenges such as climate change, waste management, water pollution, forest degradation, human-wildlife conflict, and habitat loss and fragmentation. How we as individuals and communities act in the face of these challenges will ultimately determine our success in preserving the unspoiled environment we have been so fortunate to inherit. In RSPN's environmental conservation efforts, raising the funds needed to support the many programs that we initiate remains our biggest challenge. Therefore without the support of our conservation partners such as the BTFEC, UNDP, SGP, KNCF, ADB, Embassy of Finland, Bhutan Foundation, Felburn Foundation, Norlha, ICIMOD and IISD it would have been impossible to achieve the many programs detailed in this report.

RSPN has a very dedicated and resourceful group of people and it makes me proud to be a part of such a great team. On behalf of all the Board members and the entire team at RSPN, I want to thank all our international partners for their technical support and funding, to our institutional and individual donors for their belief in us, to our conservation partners at the Ministry of Agriculture and Forests, the Department of Forest and Park Services, and the NEC for their cooperation and assistance, and to the many volunteers for being available whenever helping hands are needed. With your support we look forward to continuing our work to secure a sustainable model for our future happiness and the future well-being of Bhutan's beautiful and rich bio-diversity.

Executive Summary

Lam Dorji (Ph.D), Executive Director

I am pleased to report yet another fruitful year of accomplishments for the Royal Society for Protection of Nature (RSPN) in every departmental realm: Environmental Education and Advocacy, Conservation and Sustainable Livelihoods, Species Conservation, Research, and Membership.

Within the Environmental Education and Advocacy department, RSPN, in collaboration with the Ministry of Education embarked on a project to introduce Environmental Science subjects in classes IX and X in the first phase and XI and XII in the second phase. The final draft of the text book is ready for launch by the Ministry of Education in early 2015. RSPN continues its efforts to raise awareness on the importance of environmental education while developing local environmental literacy from the grassroots level.

In our Conservation and Sustainable Livelihoods program, we have extended our outreach programs in the Lower Kheng Region. RSPN conducted training session on the safe and efficient use of electricity, trained farmers in the practice of organic vegetable production and management, and completed a capacity building workshop for women members of the Bjoka Bamboo Craft Cooperative Groups. In Wamrong-Kangpara, farmers had the opportunity to visit Tsirang and Dagana districts to familiarize themselves with organic agriculture and slope management technologies. And, in Phobjikha, RSPN successfully renovated and redesigned the Black-necked Crane Visitor Centre (BNCVC) in preparation for peak tourist season and the arrival of our beloved winter avian residents.

RSPN's efforts in development of research program received the blessings of its Royal Patron Her Majesty the Queen in the creation and operation of Jigme Khesar Environmental Research Fund. Several research grants were awarded to college students to support their research work. RSPN has also carried out assessment of the effects of natural and human disturbance on wetland. Further, gaps between policy and implementation of hydropower and farm roads were also carried out. RSPN research program is gaining momentum with engagement in research project titled 'Green Public Procurement' in partnership with International Institute for Sustainable Development (IISD).

Our efforts to protect the critically endangered White-bellied Heron continue with ongoing monitoring of the population and its habitats. A new critical habitat

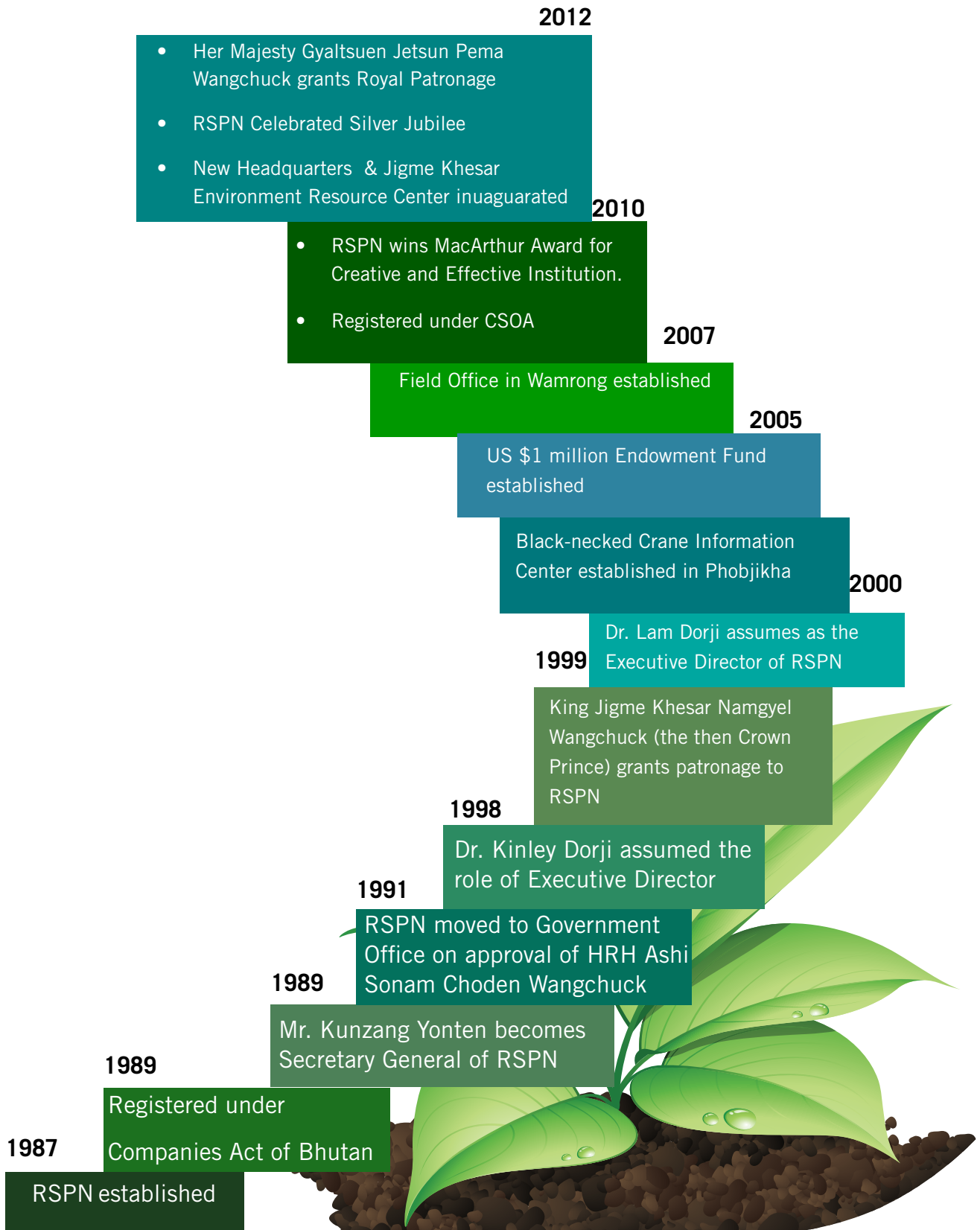
site was discovered in Phibsoo Wildlife Sanctuary with two adults. Efforts are underway to garner support for a five year collaborative project with the Royal Government to establish captive breeding program.

This year, RSPN members have continued to pursue focused voluntary engagement in environmental preservation. About 23 acres of fire affected forests in Kuenselphodrang were rehabilitated with broadleaf tree plantations.

The Bhutan Water Partnership (BhWP) continues to address water issues in the country. Apart from several small grants to address local water issues, BhWP has also worked closely with the Engineering Services Division of the Department of Agriculture to irrigate around 50 acres of land in lower Lingmuntechu that has been lying fallow for lack of water.

In our continuing efforts to conserve Bhutan's rich natural heritage, we want to thank all our domestic and international partners, and individuals from all walks of life who have contributed to RSPN's evolving achievements. The unfailing support and assistance from the Royal Government of Bhutan, donors, corporations, well-wishers, and individual members deserves our heartfelt gratitude for the above achievements. Please refer to the acknowledgement page to check out our supporters. On behalf of the Board of Directors and staff, I would like to thank all our supporters for their continued cooperation and partnership.

Tashi Delek!



RSPN - A background

Our Vision:

Future generations of Bhutan will live in an environmentally sustainable society.

Our Mission:

RSPN's mission is to inspire personal responsibility and active involvement of the people of Bhutan in the conservation of the Kingdom's environment through education, research and sustainable livelihood opportunities.

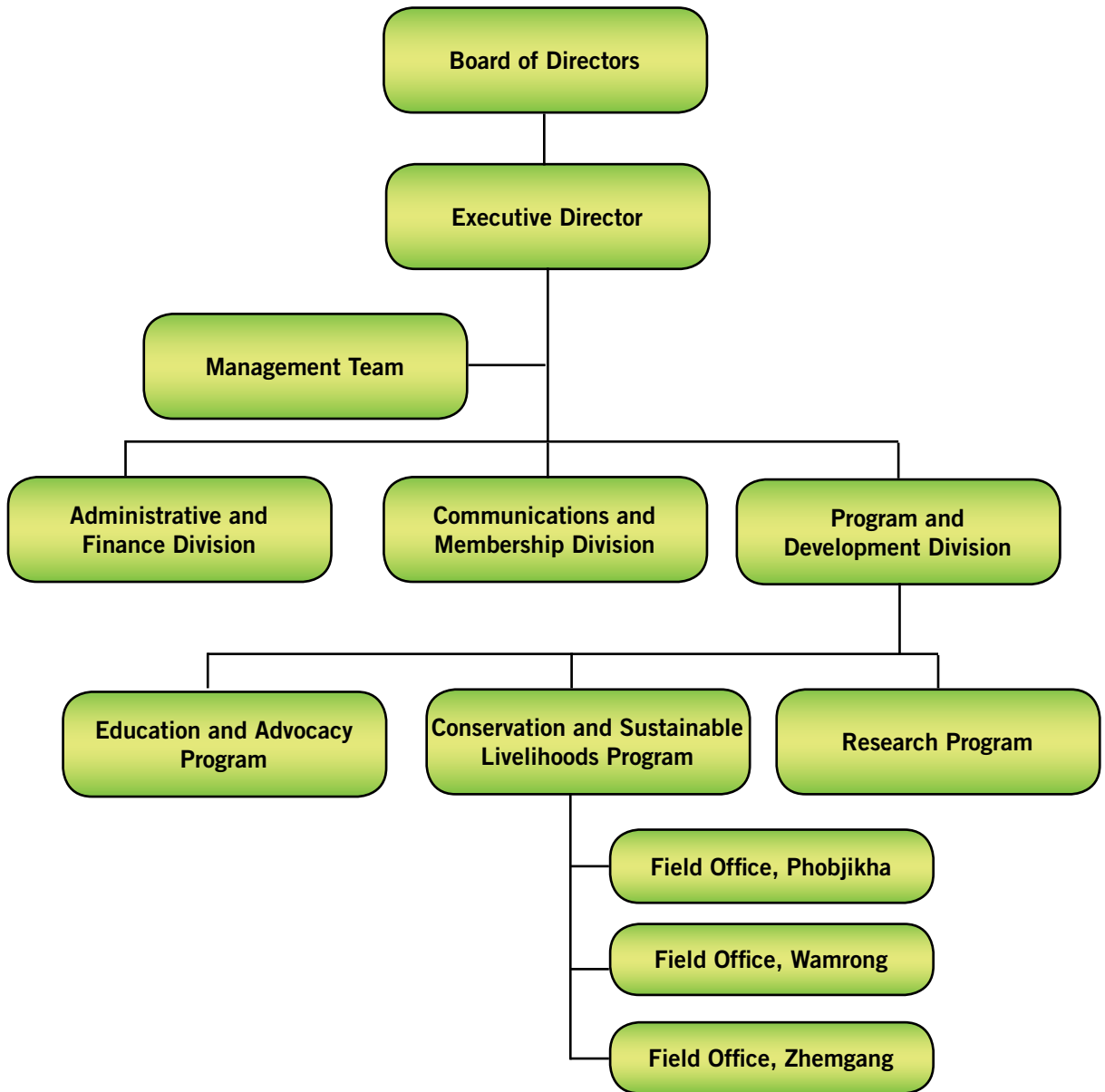
Core Values:

RSPN's core values are statements based on clear, concise, and shared beliefs of the organization that will contribute towards achieving its mission in the long run. Its core values are to:

- Provide leadership in conservation
- Promote innovative technologies and methods
- Be proactive towards environmental issues
- Be accountable and transparent
- Be efficient and effective in delivering programmes



Organizational structure



RSPN's current organizational structure

Partnership and networking

RSPN has always given importance to networking with national, regional, and international organizations working in the same field.

At the national level, in particular the Gross National Happiness Commission (GNHC) Secretariat, Department of Forest and Park Services, Department of Curriculum Research and Development (DCRD) and Department of School Education of Ministry of Education, Institution under the Royal University of Bhutan, Dzongkhag Administrations and Ministry of Home and Cultural Affairs, and WWF Bhutan Program are our main partners.

Regional networking - RSPN is a member of several regional organizations such as Climate Action Network South Asia (CANSAs) and South Asian Youth for Environment Network (SAYEN).

At the international level, RSPN is a member of the International Union for Conservation of Nature (IUCN).

Our partners in conservation programmes include International Crane Foundation (ICF), San Diego Zoo, USA, Japan Environment Education Forum, Centre for Environmental Education (CEE) Ahmedabad, India.

Its supporters and financiers include the Japan International Cooperation Agency (JICA), MacArthur Foundation, Bhutan Trust Fund for Environmental Conservation (BTFCFEC), Embassy of Finland in New Delhi, India, UNDP and GEF Small Grants Program, UNEP, Mahaphant - Thai Fibre Cement Company, and Punatsangchhu Hydro Power Authority (PHPA).





Conservation and Sustainable Livelihoods Program

RSPN recognizes the community as an integral part of its conservation efforts. Since 1999, several activities have been implemented starting from Phobjikha that have fostered environmentally viable livelihood options. These include community-based sustainable tourism, solar home lighting system, women in water and energy and environmental health programs. Such programs have enabled local communities to make alternative choices and improve their livelihoods besides rendering community support for RSPN's conservation initiatives.

Black-necked Crane visitor centre enhancement



The renovation work under progress

In order to enhance the role of the Black-necked Crane Visitor Centre (BNCVC) for educational and capacity building purposes, the centre is currently being restructured to create more space and establish better facilities to cater to the

needs of its visitors. The project entitled: “Enhancement of Black-necked Crane Visitor Information Center in Phobjikha” is being implemented with financial support from the Keidanren Nature Conservation Fund (KNCF). The project is aimed at improving the capacity of the BNCVC to impart environmental knowledge and awareness, as well as support the growing local participation in environmental conservation programs in Phobjikha. The centre will be open for visitors starting from the third week of September 2014.

KNCF is a public trust that was established in 2000 in Japan and authorized by the Ministry of Environment and the Ministry of Foreign Affairs (JAPAN) in April 2000.

Environmental education for monks

A one day environmental education program for the monks of Gangtey Goemba was conducted on 21st March 2014. The program mainly focused on the importance of conserving natural wetlands. 30 monks and 2 teachers took part in the program. The activity was carried out under the KNCF project to educate and involve people from all walks of life in Black-necked Crane conservation and environmental conservation practices, in general.



Participants during one of the training sessions

Annual crane roost restoration



Phobjikha is one of the largest winter habitats of Black-necked Cranes

As a part of the annual roost restoration for the Black-necked Crane (BNC), a 100m² area was cleared and a shallow pond created in Phobjikha valley. The activity was carried out in September 2013. Observations indicate that the new roost site was used by more than 200 BNC. The activity was carried out through the fund support of Ms. Maggie Jones, major donor of the International Crane Foundation (ICF) in USA.

Watershed management

With the completion of a fifteen month (September 2012 to November 2013) watershed management project, communities in Moshi under Lumang Geog, Wamrong now have access to a clean water supply. Major activities included: training within the capacity of the watershed management manual, an assessment of the watershed area and construction/restoration of old water tanks. A permanent water source protection program and continued plantation activities were also carried out with the communities of Moshi. The Government of Finland financed this particular project.



Before



After: The watershed being fenced

Rain water harvesting



Installation of rain-water harvesting facilities.

With financial support from the Government of Finland, Tashitse Higher Secondary School in Wamrong has installed a mini rain water harvesting facility in three major blocks of the school compound. The facility, which was installed in October 2013, is expected to supplement the existing water supply for the student's toilet facilities, thereby improving both sanitation and personal hygiene.

Human wildlife conflict

A refresher training seminar, aimed at both sensitizing community people on the present human-wildlife issues and updating stakeholders on the sustainable institutional mechanism of HWC management, was conducted in Passaphu and Maduwa village in January 2014. The HWC was instituted by the RSPN through support from the Joint Support Program of Gross National Happiness Commission. Forty seven participants from the existing HWC members attended the course.



A woman guards her maize field from wild animals (top)

Almost all farming fields can be seen with such sheds (right)



Study tour



An official explaining basics of green house farming to participants

As part of the sustainable agriculture project supported by Norlha, a farmer's study tour to Tsirang and Dagana was organized with the objective of providing exposure to the logistics and merits of organic farming and management. Farmers were introduced to the benefits of organic farming and slope management via hands-on training as well as organized site visits.



Land management training

One component under the sustainable agriculture project is slope management. 47 Farmers from Moshi, Passaphu, Khaimanma and Maduwa village participated in slope management training organized by the RSPN, with technical support from the National Soil Service Centre in Thimphu. The participants were provided with Napier seedlings for land management to serve the dual purpose of soil conservation and fodder supply for the livestock.



The farmers engaged in land slope management activities

Poultry project in Kangpara

The 2nd phase backyard poultry project in Kangpara geog came to an end with the supply of poultry feed for 15 households who opted for backyard poultry keeping. Training on poultry management was also conducted as a part of the awareness program on proper poultry keeping and care. The project was supported by the Joint Support Program under GNHC. The livelihoods of backyard poultry keepers have improved through supplemental income generation and increased access to a proper nutritional diet in the household.



Farmers being trained on ingredients for poultry diets.

Training on organic farming



Participants being taught on organic farming



As part of part of the Community-based Sustainable Livelihoods initiative, a day-long training was conducted to sensitize farmers on the prospect of organic farming in Wamrong and Kangpara, paying particular attention to how project participants could use various methods within the organic farming framework.

A knowledge sharing workshop on gender and energy



Workshop in session (top) and participants of the workshop (above)

A half day Knowledge Sharing Workshop on Gender Review of National Energy Policies and Programs in Bhutan was organized by RSPN on 1st October, 2013 in RSPN's Auditorium, Thimphu as part of ADB funded Project. The workshop was aimed at presenting the findings of the Gender Review and seeking inputs and suggestions of baseline surveys conducted for the project area (Lower Zhemgang).

About 13 key stakeholder members from the Department of Renewable Energy, Bhutan Power Corporation, UNDP, Agency for Promotion of Indigenous Craft, Bhutan Association of Women Enterprise, Loden Foundation, Zhemgang Dzongkhag, Rural Development Training Center (Zhemgang), Royal Manas National Park and 11 staff members of RSPN attended the workshop.

Women members of Bjoka Bamboo Group trained

A three-day training on Technical Skills on Bamboo and Cane Products to the 110 women members of Bjoka Bamboo Craft Cooperative Group was conducted in 4 sessions from 11th March - 22nd March, 2014. It is a part of the ADB funded project activity. The objectives of this training were to enhance energy-based livelihoods for rural women, and build the capacity of women to improve local service delivery and strengthen the operational sustainability of local resources.

The training was meant to educate the women participants on the importance of sustainable management of bamboo and cane resources in the wild for future generations. Participants learned the importance of maintaining quality products to earn more income and improved livelihoods. More importantly, the women had the opportunity to weave the new Bangchung (Bamboo Container) variety, locally called “Sem-Rig Bangchung” at the end of the training day.



The trainer shows preferred method of dyeing bamboo (top) and participants engaged in hands-on training in weaving different patterns bamboo products. (right)

CFMG members of lower Zhemgang trained



A Sr. Forester trains locals on silviculture methods at Pantang (top)

Training on Sustainable Harvesting for the communities of Bjoka and Ngangla (right)



A three-days training on Sustainable Harvesting of Forest Products and Non-Wood Forest Products was conducted for the Community Forest Management Group (CFMG) Members of lower Zhemgang. The main objectives of this training, oriented around book-keeping and silviculture options for the Community Forest Management Group Members, are to enhance energy-based livelihoods for rural women, and capacity building to improve local service delivery and strengthen the operational sustainability of local resources.

Awareness campaign on safety and efficient use of electricity

The awareness campaign was conducted in seven Gewogs starting from 7th of May - 10th of June, 2014. The campaign is a part of the ADB Project with the objective to generate awareness on efficient and safety use of electricity through gender sensitive user-education. The awareness programme included: class-room lectures, display banners and distribution of posters, the showing of videos on the safety and efficient use of electricity, and practical demonstrations



During one of the awareness meetings (top) and awareness banner (above)

Homestays established in Phobjikha

Twenty homestays were established by the month of September 2014, 10 homes represented in Gangtay and another 10 in Phobji Gewog. The CBST project provided cost sharing support to the homestays in order to procure the necessary materials to develop sanitation and accommodation facilities. A Homestay Operation Manual was also developed as a resource guide for the homestay hosts



Officials review standards of one of the homestays in Phobjikha

Community-based Sustainable Tourism (CBST) Group established in Phobjikha



Finance Coordinator from RSPN trained CBST Group members on basic book-keeping

A CBST Group, consisting of various members from the established homestays, local guides, souvenir producers, and community representatives from the Phobjikha Environment Management Committee (PEMC) was formed. The group was formed at the Black-necked Crane Visitor Center (BNCVC) on 15th, August 2013 during a workshop held regarding the development of a business management plan for CBST in Phobjikha. As recommended in the plan, a management team comprising of seven community members from both gewogs was also formed.

A five-day Basic Office Management training for the team was held from 23rd - 27th January 2014, and desktop computer and printer were provided for the CBST Group office.

Biking tourism: a value addition for CBST in Phobjikha

Biking tourism is another CBST product available in Phobjikha. With support from the Austrian Coordination Office (ACO) and the Association of Bhutanese Tour Operators (ABTO), seven mountain bikes and accessories were provided to the new CBST Group in Phobjikha.

Two local guides, Mr. Gyaltshen and Mr. Sonam Dorji, were trained at the Yu-Druk Mountain Bike Shop in Thimphu for 5 days between the 10th - 15th September 2013 on basic maintenance and repairs for the bikes. They were also given field orientation training as biking guides in Phobjikha.



The trainees learn to repair bikes.

CBST promotional meeting and familiarization tour for local Tour Operators

A meeting to promote CBST in Phobjikha was conducted on 22nd January 2014 at the RSPN JKERC Auditorium in Thimphu. It was attended by 35 local tour operators. The meeting was organized to provide a platform for the local CBST Group to introduce the CBST services in Phobjikha. Presentations regarding the different services and the package rates were made.

A familiarization tour for tour operators, registered through the Association of Bhutanese Tour was conducted from 16th-18th February 2014, and attended by 27 participants. The tour was organized as an introduction to the CBST programs and available services, and to encourage participants to promote Phobjikha as a destination for community-based tourism in Bhutan.



The participants (top) and the familiarization of CBST in the RSPN headquarters (above)

Gangtey Nature Trail boardwalk built



The boardwalk in Phobjikha wetland

A boardwalk covering a distance of over 320 metres was developed along the wetland on the Gangtey Nature Trail. Due to the unsustainability of using wood within the wetland, the boardwalk was developed using Shera planks made from eco-friendly fiber cement.

CBST website launched

A new website to help promote the Community-based Sustainable Tourism was launched with domain name www.communitytourism.bt. The website provides information about the local tourism services, facilities, programs, and contact information for the local CBST coordinator.



Screenshots from www.communitytourism.bt

Environmental Education and Advocacy Program

Environmental education programs are geared toward helping the people of Bhutan enhance their understanding of the environment and providing them the knowledge and skills to actively participate in conservation at the grassroots level.

Integration of environmental education in formal and non-formal education systems and capacity building are priority areas being pursued in collaboration with the Ministry of Education.

Development of environmental science textbook

RSPN in collaboration with the Department of Curriculum, Research and Development (DCRD) of Ministry of Education, is in the process of developing an Environmental Science textbook for classes IX and X. Environmental Science will be introduced as an optional subject from classes IX to X. Beginning 2015, class IX will have an option to study Environmental Science.

This project is funded by Bhutan Trust Fund for Environmental Conservation (BT FEC).



It included numerous workshops and meetings while developing the textbook.

World Water Day celebrated in Paro

On 22 March 2014, coinciding with the World Water Day, Bhutan Water Partnership/RSPN in partnership with Paro Forest Division, marked the day in Paro.

Five schools and the Paro College of Education cleaned and adopted a ~10km stretch of the Pachu.



Cleaning of river banks in Paro coinciding with World Water Day 2014

IWRM sensitization for local leaders



Training is session (top) and the participants (above)

About 87 local leaders from Haa, Tsirang, Dagana, Trongsa, Bumthang, Chukha, Samtse, Zhemgang and Sarpang dzongkhags were sensitized on the principles of Integrated Water Resource Management (IWRM). The groups are now expected to incorporate water resource conservation initiatives in their plans and policies.

Small grants for water projects

The Bhutan Water Partnership/RSPN funded four small scale projects to address water related issues. Tango Shedra in Thimphu improved the waste water management system while Tashigang Gonpa improved their drinking water, both in terms of quality and quantity. The Sherubtse College in Trashigang protected the wetland and enhanced its services and Jigme Chholing gewog in Sarpang improved their drinking water and protected their catchment.

Irrigation project at Wangjokha - Thangho in Wangdue Phodrang



Officials from RSPN and local representatives at the project site.

Funded by Bhutan Water Partnership – WACREP Project/RSPN, the irrigation project brings an additional 49.73 hectares of paddy land under irrigation belonging to 31 households of Wangjokha - Thangho in Wangduephodrang. It is expected to increase the rice yields which will contribute to community food security and support poverty alleviation efforts. The project will also minimize the existing conflicts on the Lingmutey chu issue.

Species Conservation

Black-necked Crane

The coordinated annual BNC count organized on 17 January 2014 at 0600 hours found 550 BNCs for 2013-2014, an increase by 87 individuals that visited in 2012-2013 winter. The coordinated BNC count was conducted jointly by stakeholders across the country and include Bomdiling Range Office and Bomdiling Wildlife Sanctuary in Trashiyangtse, Chumey Range Office and Wangchuck Centennial Park in Bumthang, and Khotakha Range Office, Phobjikha Beat Office and Aman Gangtey.

We suspect the observed increase to be an encouraging sign in support of the strong conservation policy adopted by the Royal Government of Bhutan and the unfailing support we receive from our donors, partners and the communities living in BNC wintering habitats.



Black-necked cranes at one of the summer habitats in Ladakh, India

White-bellied Heron

Despite conducting several educational programs, community workshops, meetings and advocacy; the decrease in the number of WBH is a concern to RSPN, our partners in the Royal Government of Bhutan, donors and supporters alike. 2014 population survey indicates an increase of two individuals that brought the total number of WBH to 22 from 20 in 2013 after confirming their existence in the new habitat – Phibsoo under Sarpang Dzongkhag.



White-bellied Heron juveniles at one the nesting sites in Wakleytar, Tsirang

Research Program

RSPN has identified research as the avenue to position the organization as science-based institution in fostering environmental conservation and advocacy on the basis. This has become even more important under evolving parliamentary democracy. The research program provides a platform for the generation of science-based information as a means to advocate for environmental education and support informed decision-making.

Fish pond developed



The fish pond

Frequent fishing activities by the local people often disturbed the feeding habitat of the WBH. To cut down on the frequency of fishing activities, community fish ponds were developed in Berti in Zhemgang and Sunkoshgoan in Tsirang.

Research presentation

JKERF grant recipients made a comprehensive research presentation on various environmental subjects. Recipients were undergrad students from College of Natural Resources (CNR), Lobeyasa and Sherubtse College, Kanglung. The funding for the grant was secured from the Gross National Happiness Commission under the Joint Support Program (JSP).

The research initiative is part of the Jigme Khesar Environmental Research Fund (JKERF) launched by Her Majesty Gyaltshen Jetsun Pema Wangchuck, Queen of Bhutan as the Royal Patron of Royal Society for Protection of Nature (RSPN) in August 2013.

The research findings will be made public through the Jigme Khesar Environmental Resource Centre attached with RSPN Research Program.

Title of the research	Recipient/Institution
Radial growth of Blue pine trees along altitudinal gradient.	Mr. Tenzin Dorji, College of Natural Resources
Influence of Human disturbances on floristic diversity and composition in Phobjikha valley.	Ms. Jigme Zangmo, College of Natural Resources
Forest fire and its impact on community – Case study on forest fires in Eastern Bhutan. (Trashigang, Mongar, Trashiyangtse).	Mr. Pema Dorji , Sherubtse College
Forest Resource Utilization by the communities of Semtokha, Yesipang, Hontso and Dochula, Western Bhutan.	Mr. Phurba Wangdi, College of Natural Resources
Human-Wildlife Conflict: Crop depredation by wildlife in relation to the habitat type under Tsirang Dzongkhag.	Mr. Sacha Dorji, College of Natural Resources
Floristic Diversity along the Seasonal and Perennial Streams of Phobjikha Core Wetland.	Ms. Ugyen, College of Natural Resources
Effect of Himalayan Dwarf Mistletoe (<i>Arceuthobium minutissimum</i>) on the growth performance of Blue pine stands in Thimphu.	Mr. Chhimi Dorji, College of Natural Resources

Stakeholdermeeting for WBH conservation



The meeting in session

With the aim to draw future plans and to strengthen WBH conservation, a day long White-bellied Heron (WBH) conservation meeting with the stakeholders was organized on 8 April, 2014 in Mendhagang Geog Centre, Punakha.

About 45 participants comprising officials from Wangdue Forest Division, Watershed Management Division, Wildlife Conservation Division, Tewang Geog, Chubu Geog, Dzomi Geog, Punatshangchu Hydropower Project Authorities and two participants from Zhemgang Berti participated in the meeting.

WBH nest survey and findings

White-bellied Heron pairs leave their pairing and courting ground to start nest building in last week of February or first week of March. Since the nesting sites are usually in far off places, local people from nearby nesting places are hired to survey and monitor the nests. By second and third week of March 2014, the number nests found were given in table:

Sl. No.	Place Name	Dzongkhag	Nest	Eggs	Chicks	Remarks
1.	Tshosabu, Tewang Gewog	Punakha	1	2	2	New nest in tall big tree
2.	Hararongchu, Mitina Gewog	Wangdue Phodrang	1	3	2	New nest in medium tree
3.	Walkley Tar,	Tsirang	1	4	3	New nest in medium tree
4.	Burichu,	Tsirang	1	3	0	New nest
5.	Berti, Trong Gewog	Zhemgang	1	2	2	Old nest in tall big tree reused
6	Ada	Wangdue Phodrang	1	2	2	New nest
Total			6			

Ecosystems and ecosystem services assessment



Barshong Gewog in Tsirang

With an objective to understand the state and dynamics of ecosystems and their linkages to human wellbeing and mainstream the knowledge into planning and development strategies, the RSPN has completed the household survey on Ecosystems and Ecosystem Services in Barshong Gewog, Tsirang Dzongkhag. It was conducted from 10th - 30th May, 2014.

The assessment is part of the ongoing Ecosystems and Ecosystem Services Assessment in Bhutan under the Rural Livelihoods and Climate Change Adaptation in the Himalayas (Himalica), supported by ICIMOD. The final assessment report will be published on completion of the project towards end of December 2014.

Green Public Procurement in Bhutan

The kick-off meeting with the stakeholders for Green Public Procurement in Bhutan was held on 31 March 2014 in the conference hall of the Royal Society for Protection of Nature, Thimphu. A cross sectorial strategy for sustainable industrial competitiveness, GPP in Bhutan is expected to scale-up public demand for environmentally and socially preferable goods, services and infrastructure, and support the achievement of Gross National Happiness and 'The Middle Path'.

GPP Project of 3.5 years in Bhutan is funded by the European Union and is expected to be driver of green growth in Bhutan.

The project consortium includes International Institute of Sustainable Development (Canada/Switzerland), Collaborating Centre on Sustainable Consumption and Production (Germany), Bhutan Chamber of Commerce and Industry, Royal Institute of Management and the Royal Society for Protection of Nature. The meeting was attended by government and public from the Ministry of Finance, Ministry of Works and Human Settlement, Druk Holding and Investment, Gross National Happiness Commission and National Environment Commission.



GPPB Logo

Membership Program

RSPN efforts in development of membership activities seek to support the constitutional requirement that 'protection of the environment is the fundamental duty of every citizen'. As a membership-based organization, RSPN provides the platform for concerned individuals to learn, share, and act in the common interest of safeguarding the environment. We welcome individuals, institutions and organizations to become members of RSPN.

RSPN has 347 members comprising of nationals, foreigners, young and adults. This year, there has seen increased engagement of member in RSPN activities.

Plantation

As a part of regular membership activity and to rehabilitate/restore fire burnt areas, 15000 trees were planted in an area of 22.728 acres in Kuenselphodrang. Supported by Embassy of Finland and CLACC-IIED, more than 140 members volunteered for the activity.

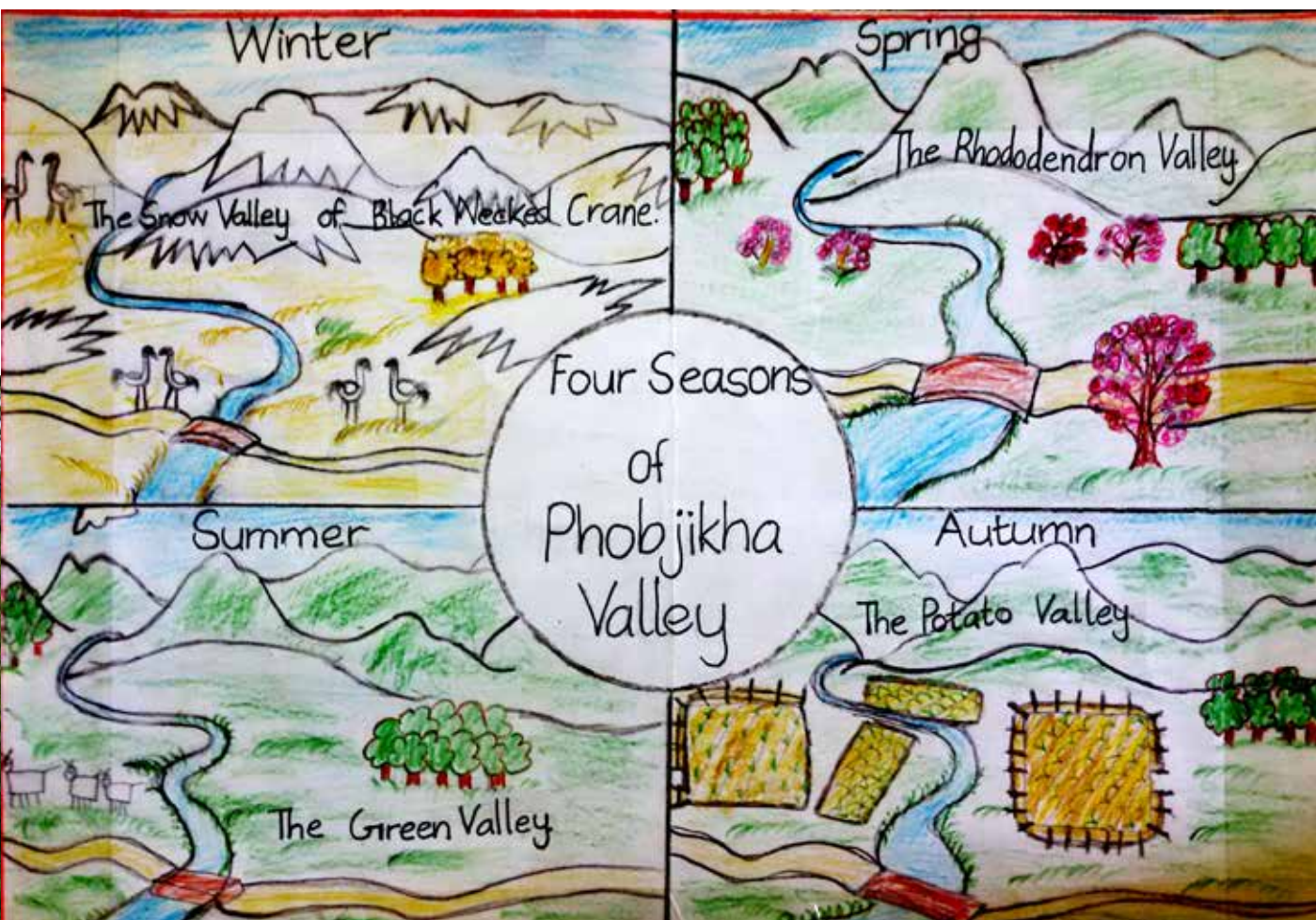


RSPN Members during one of the meetings.

Art and essay competition

In order to generate awareness and sensitize Bhutanese youth on Climate Change and its global impact, the Royal Society for Protection of Nature organized a theme-based Art and Essay Competition in 2014 for students.

The results were declared coinciding with the birth anniversary of Her Majesty Gyaltsuen Jetsun Pema Wangchuck, Royal Patron of RSPN on 4 June 2014 and prizes were disbursed to the winners.



One of the winning art entries.

Category/ Position	First	Second	Third
Art Category I (PP-III)	Dolma Tshokye Yoezer Class III Phobjikha MSS, Wangdue Prize: Nu. 5000	Tenzin Lekdrup Class III C Sarpang LSS, Sarpang Prize: Nu. 4000	Karma Wangdi Class II A Shaba PS, Paro Prize: Nu. 3000
Art Category II (IV-VI)	Sonam Tshering Class VI Drametse MSS, Mongar Prize: Nu. 5000	Tshering Lhamo Class V Samtse LSS, Samtse Prize: Nu. 4000	Class VI B Dagapela MSS, Dagana Prize: Nu. 3000
Essay Category I (VII-VIII)	Phunstho Choden Tenzing Class VIII C Phuntsholing LSS, Chukha Prize: Nu. 8000	Karma Tshering Lhaden Class VIII D Wangdicholing LSS, Bumthang Prinze: Nu. 6000	Pratikcha Gurung Class VIII A Dagapela MSS, Dagana Contact No. 06 483176 Prize: Nu. 4000
Essay Category II (IX-X)	Ugen Kezang Class IX Druk School, Thimphu Prize: Nu. 10,000/-	Thinley Penjor Class IX F Gelephu HSS, Sarpang Prize: Nu. 8000	Passang Dorji Class IX B Chapcha MSS, Chukha Prize: Nu. 6000
Essay Category III (XI-XII)	Tashi Chopel XI Sc Tashitse HSS, Trashigang Prize: Nu. 12,000	Ashik Rai Class XI Science (B) Chukha HSS, Chukha Prize: Nu. 10,000	Dinakar Homagai Class XII Arts Sarpang HSS, Sarpang Prize: Nu. 8000

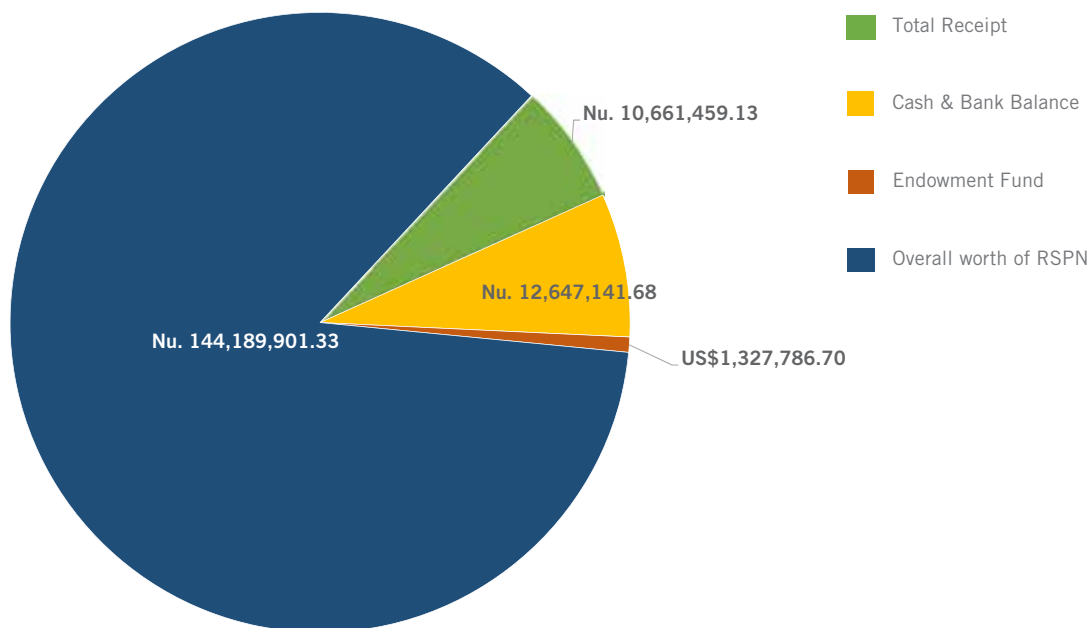
Unaudited Financial Report - 2014

Overview of RSPN's financial performance in 2014.

RSPN's unaudited account statements reveal a total receipt of Nu. 33,360,793.67 and US\$177,100.65 equivalent to total of Nu.10,661,459.13 in the fiscal year 2013-2014. As of 30 June 2014, RSPN maintains a cash and bank balance of Nu. 9,563,383.73 and US\$210,005.41 summing up to an equivalent of Nu. 12,647,141.68

In addition, RSPN's Endowment Fund maintained with the Bhutan Trust Fund for Environmental Conservation (BT FEC) is valued at US\$1,327,786.70 This excludes the accrued interest, if any, for the fiscal year 2013-2014.

On the whole, RSPN's entire resources including assets and capital fund amounts to Nu.144,189,901.33, i.e., the overall worth of RSPN as of June 30, 2014.



Overview of RSPN's financial performance in 2014.

**ROYAL SOCIETY FOR THE PROTECTION OF NATURE
STATEMENT OF AFFAIRS (BALANCE SHEET) AS AT JUNE 30, 2014**

Schedule	For the year ended June 30, 2014			For the year ended June 30, 2013		
	(A) Nu.	(B) US\$	(A+B) TOTAL (Nu.)	(A) Nu.	(B) US\$	(A+B) TOTAL (Nu.)
Assets						
Fixed Assets (Net Block)						
Furniture & Fixture	1,883,352.05	-	1,883,352.05	1,857,433.41	-	1,857,433.41
Office Equipments	4,574,189.82	-	4,574,189.82	4,588,909.99	-	4,588,909.99
Trekking Equipments	127,209.78	-	127,209.78	145,138.67	-	145,138.67
Vehicles	1,086,406.43	-	1,086,406.43	1,324,569.45	-	1,324,569.45
Communication/Other Equipments	184,361.52	-	184,361.52	179,607.21	-	179,607.21
Building (Observation Center)	1,318,106.09	-	1,318,106.09	1,316,884.23	-	1,316,884.23
Building (Head Office & JKERC)	39,183,247.77	-	39,183,247.77	37,971,342.38	-	37,971,342.38
Accrued Interest	-	-	-	-	-	-
Endowment Fund	-	1,327,786.70	79,932,759.34	-	1,268,372.68	74,136,383.15
Investment with BTTEC	-	1,327,786.70	79,932,759.34	-	1,268,372.68	74,136,383.15
Total Fixed Assets	48,356,873.46		128,289,632.80	47,383,885.34		121,520,268.49
Current Assets						
Cash	920.03	59.50	4,397.81	10,685.03	59.50	3,477.78
Bank	956,246.37	210,025.91	13,232,260.81	17,580,046.63	141,791.54	8,287,715.51
Receivables & Prepayments	2,684,932.75	415.00	2,709,189.50	1,236,986.41	3,566.00	208,432.70
Stock Balance	80,500.00	-	80,500.00	80,500.00	-	80,500.00
Total Current Assets	3,722,599.15	210,500.41	16,026,348.11	18,908,218.07	145,417.04	8,499,625.99
Less: Current Liabilities						
Recoveries/Remittances	126,079.58	-	126,079.58	386,502.58	-	386,502.58
Total current Liabilities	126,079.58		126,079.58	386,502.58		386,502.58
Total Assets	51,953,393.03	1,538,287.11	144,189,901.33	66,678,605.99	1,413,789.72	149,314,615.12
Financed by:						
Capital Fund	32,920,660.68	91,274.79	40,579,298.88	43,284,839.13	47,818.10	2,794,967.94
(Surplus/deficit)	19,032,732.35	1,447,012.32	103,610,602.45	23,393,766.86	1,365,071.62	79,841,041.19
Opening Accumulated Fund	-	-	-	-	-	-
Total Accumulated Fund	51,953,393.03	1,538,287.11	144,189,901.33	66,678,605.99	1,413,789.72	149,314,615.12

Note: Dollar equivalent calculated at exchange rate of USD 1= Nu. 60.20 as of June 30, 2014 (Bank of Bhutan Ltd.)


(Sonam Kunzang)
Financial Coordinator


(Jam Dorji Phodup)
Executive Director


(Ugyen Rinzin)
Chairman

(Royal Audit Authority)
Thimphu

Our Supporters

Sl. No	Project's name	Donor/Funding Agency	Project duration	Total amount granted (Nu.)
1	Community Based sustainable tourism	JEEF/JICA, JAPAN	42 Months	Yen ¥56,000,000
2	WBH Conservation Project	Felburn Foundation	60 Months	USD \$31,000
3	Climate Change Networking - CLACC	IIED	15 Months	GBP £ 3,200
4	The Protection of White Bellied Heron	SGP/UNDP	36 Months	USD \$50,000
5	Improving Gender Inclusive access to Renewable Energy	Asian Development Bank	27 Months	USD \$268,632.17
6	Introducing environmental Science in the formal education in Bhutan	BTFEC	36 Months	Nu. 12,236,950
7	Enhancement of Black necked Crane Visitor Center year 2	KNCF	12 Months	USD \$57,662
8	Sustainable Agriculture Program	NORLHA People in the Himalayas	12 Months	USD \$53,068
9	Ecosystems and Ecosystem services assessment in Bhutan	ICIMOD	12 Months	USD \$21,000
10	WASH Program (SDF)	SAARC Development Fund	36 Months	USD \$5,66,886
11	Green Public Procurement	IISD Geneva/ Switch Asia	42 Months	USD \$122,457
12	Enhancement of Black necked Crane Visitor Center year 3	KNCF	12 Months	USD \$55,383
13	TA to ADB for Adapting to Climate Change through IWRM in Bhutan	ADB	17 Months	USD \$161,985



Royal Society for Protection of Nature
P. O. Box: 325, Lhado Lam, Kawajangsa
Thimphu : Bhutan

Telephone: +975 2 322 056/326 130

Fax: +975 2 323 189

E-mail: rspn@rspnbhutan.org

Website: www.rspnbhutan.org