

A photograph of a plant with several white, bell-shaped flowers and buds against a dark green background. The flowers are arranged in a cluster, with some fully open and others as buds. The background is a dense, dark green foliage.

**Royal Society for
Protection of Nature**

**ANNUAL REPORT
1999-2000**

Royal Society for Protection of Nature



Under the Patronage of His Royal Highness
The Crown Prince of Bhutan

PHOTOGRAPHS

Eleanor Briggs
Rebecca Pradhan
Ugyen Lhendup
Kinley Tshering
Jigme Tobgay
Dago Tshering
RSPN Archive

ILLUSTRATIONS

Sonam Jamtsho

COVER

Cardiocrinum giganteum (wall.) Makino

Ornamental flower of the Lilliaceae family found in damp / moist forests of Bhutan at altitudes 1830-3660 m.

DESIGN

Fundraising & Publicity Unit, RSPN

Royal Society for Protection of Nature, Post Box 325, Thimphu, Bhutan
Tel: +975-2-326130, 322056 Fax: +975-2-323189 email: rspn@druknet.net.bt

RSPN Annual Report (July 1999-June 2000)

CONTENTS

Statement by Patron	5
Executive Summary	6
Introduction	7

TECHNICAL REPORT

Environment Education Program	11
Nature Clubs	12
Annual EE Programs	18
Environment Education Non Formal Sector	20
Advocacy Programs	
Integrated Conservation and Development Program	23
Accomplishments 99-2000	25
PCAP Committee	25
Women in Environment	25
Observation cum Education Center	26
Ecotourism	27
Alternative Energy	28
Annual Black Necked Crane Festival	29
HRD Program	30
Plantation	30
Project Mid- term Assessment	31
Black Necked Crane Research & Monitoring	32
Fundraising and Membership Program	35
RSPN Endowment Fund	36
Membership Program	38
Adhoc Programs	39
RSPN Office	40
Wind Beneath Our Wings	41
Meet the ReSPiaNS	42
FINANCIAL REPORT	43



“The kingdom of Bhutan is blessed with an exceptional and largely intact natural environment. I have joined RSPN in its mission to raise awareness of the challenge that faces us now. We must all accept our individual responsibility to conserve the rich diversity of Bhutan’s plant and animal species, for the benefit of both the natural world and our children’s future.”

Jigme Khesar Namgyal Wangchuck.

His Royal Highness Dasho Jigme Khesar Namgyal Wangchuck
the Crown Prince of Bhutan, Royal Patron of RSPN

Royal Society for Protection of Nature is the first and only national NGO (non-government non-profit organization) in Bhutan till date that exclusively concerns itself with the environment and its conservation.

Presently it is registered under the Companies Act of Bhutan till a more appropriate NGO Act is passed by the Royal Government of Bhutan.

RSPN's conservation programs include Environment Education Program, Integrated Conservation and Development Program and Advocacy programs.



Mission Statement

*"To inspire personal responsibility and actively involve the people of Bhutan in the conservation of the Kingdom's environment * through education, applied research and information dissemination; and collaboration with concerned agencies and indigenous institutions. "*

Guiding Principles

- ✦ Respect Tsa-wa-sum.
- ✦ Recognize and draw strengths from Bhutanese culture.
- ✦ Be totally committed to conservation goals.
- ✦ Be accountable and transparent.
- ✦ Be flexible and responsive to the public's environmental concerns.

Goals

- ✦ To become a catalyst in promoting positive attitudes and self-sustaining citizens' action to conserve Bhutan's rich environmental heritage.
- ✦ To become an efficient, effective and financially self-reliant conservation organization.
- ✦ To become a major source for information on Bhutan's environment.

EXECUTIVE SUMMARY

Over the years, the programmes of the Royal Society for the Protection of Nature (RSPN) have gained diversity and professionalism. RSPN was given a major boost when His Royal Highness DASHO JIGME KHEGAR NAMGYAL WANGCHUCK consented to be the patron of the only environmental NGO in the Kingdom. The organization has seen not only advancement in good governance but also implemented numerous programmes addressing issues of environmental concern. The dynamic leadership of DASHO SANGAY THINLEY (President) and guidance provided by the Board has given RSPN a new look. The restructuring of the organization into four program units and the recruitment of five additional staff have facilitated efficient transfer of concerns into practical field activities.

The Environment Education Unit has extended its arms to promote conservation awareness and education through out the country. The unit has established and is providing support to 63 nature clubs that actively engage in school and local level environmental activities. Training workshops organized in training institutions and for nature club coordinators have tremendously enabled the unit to generate a multiplier effect in building capacity of nature clubs and institutions to act for the environment.

The first ever community based conservation program was initiated by Conservation and Development Unit. The unit's pursuance of the 'Sustainable Development' or the 'Middle Path' policy of the Royal Government was made possible through the Integrated Black Necked Crane Conservation and Development Program in Phobjikha. With support from GEF Small Grants Program, SPIEC – Japan and WWF Bhutan Program, the unit has implemented a number of projects to lay foundations for enhancing the welfare of the local people through conservation of the cranes and their habitat. Though constraints are not unusual, the accomplishments are very encouraging. It will not be far before Phobjikha becomes a model conservation and development area in Bhutan. The unit has also been actively engaged in monitoring and research of the Black necked cranes and their habitats in Bhutan with technical assistance from the International Crane Foundation.

Organizations, like any individual, need to prepare for a rainy day. In order to ensure continuity of its environmental programs, RSPN's Fundraising and Publicity Unit has embarked on the creation of a million dollar endowment fund. A fundraising strategy and membership drive was developed with technical assistance from WWF – UK. The unit has initiated a number of fundraising activities. Membership program on the other hand has been another area where the unit was heavily involved. The implementation of the membership strategy has enabled the unit to not only increase RSPN membership but also actively involve members in various environmental activities.

RSPN in general has also been able to accommodate ad-hoc but significant activities that have enhanced its relationship with the Royal Government, local and foreign organizations and agencies. The activities in general reiterates RSPN's complementary role in pursuing the conservation goals of the Royal Government of Bhutan.

The fiscal year 1999 – 2000 has also seen a change in the organization's Executive Director. Dr. Kinlay Dorji, who laid foundations for RSPN's credibility handed over the charge to me in November 1999. His contributions to RSPN have been incredible and his visions are deeply rooted in the growing conservation endeavors of the organization.

I would like to conclude by thanking all organizations, guardians and individuals for their encouragement and support and their belief in RSPN's conservation endeavours.

TASHI DELEK!

Lam Dorji,
Executive Director



Environment

TECHNICAL REPORT

RSPN. Major programs in the formal education sector include support to school/institution based nature clubs across the Kingdom; production of worksheets, textbooks and other materials. The RSPN is active in the formal sector.

The RSPN is active in the formal sector, and is providing support to school/institution based nature clubs across the Kingdom. The RSPN is active in the formal sector, and is providing support to school/institution based nature clubs across the Kingdom. The RSPN is active in the formal sector, and is providing support to school/institution based nature clubs across the Kingdom.



Environment Education Program

The Environment Education Unit is one of the oldest program units of RSPN. Major programs in the formal education sector include support to school/institution based nature clubs spread out throughout the Kingdom; conduction of workshops and EE programs for Teacher Training Institutes and Forest Guards; in close collaboration with the Education Division of the Royal Government.

The Unit also organizes annual essay and painting competitions targeting the youth to promote awareness on environmental issues. Though more emphasis is given to the formal education sector, some EE programs have also been organized in the non-formal sector in collaboration with the Non-formal Education Unit (Education Division, RGOB), National Parks and WWF-Bhutan Program.



Nature Clubs

Nature clubs were initiated in Bhutan with an aim to encourage students to increase awareness and understanding of their local environment and to enable them to contribute to its conservation by sharing their knowledge and skills with their friends in school, among family members and the local community, ultimately influencing the whole society.

Support to Nature Clubs affiliated to RSPN

- Nature club Handbook
- Financial Support
- Support visit by RSPN Staff (atleast once a year)
 - Publications
 - RSPN Newsletter
 - Birds of Bhutan
 - Journals
- Best Nature Club Award
- Annual training workshop for Nature Club Teachers
- Environment camp for atleast 2 Nature clubs in the National Parks
- Availability of Nature club Action grant for environment projects in the locality

In this fiscal year the number of nature clubs affiliated to the Society increased from 48 to 63 nature clubs. This means that 18% of the school nature clubs in the country have now been affiliated to RSPN. The increase in number of nature clubs under the RSPN umbrella from last year has been quite gradual mainly due to the selective measures taken by the EE unit, keeping in mind the limited funds from donors for the program.



Nature Club-Rangjung Junior High School, Trashigang



Nature Club Students-Tshenkarla Junior High School, Tashiyangtse



Nature Club Garden-Zhemgang High School

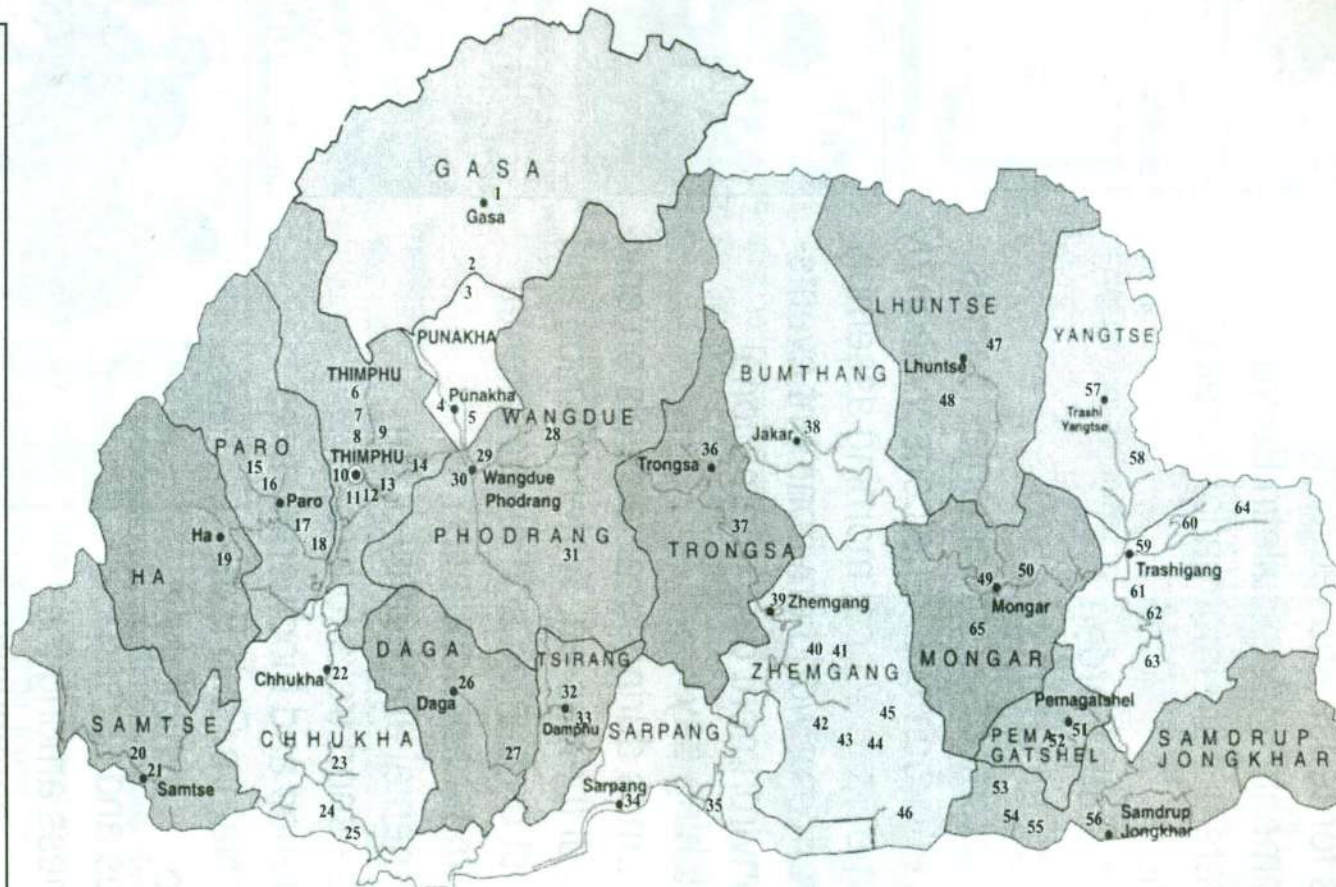


Nature Club - Tangmachhu High School, Lhuentse

RSPN Nature Clubs in the Kingdom

Legend 1-35

- GASA** 1. Gasa Junior High School
2. Damji Community Primary School
- PUNAKHA** 3. Goenshari Community Primary School 4. Punakha High School
5. Khuruthang Junior High School
- THIMPHU** 6. Dechencholing Junior High School 7. Zilukha Junior High School 8. Changangkha Junior High School 9. Yangchenphug High School 10. Jigme Namgyel Junior High School 11. Rinchen Kuenphen Junior High School 12. Motithang High School 13. Choden Junior High School 14. Khasadrapchhu Junior High School
- PARO** 15. Drugyel High School 16. Paro Junior High School 17. Shaba High School 18. Teachers Training College
- HAA** 19. Ugyen Dorji High School
- SAMTSE** 20. Samtse Junior High School 21. National Institute of Education
- CHHUKHA** 22. Chhukha High School 23. Gedu High School 24. Phuentsholing High School 25. Phuentsholing Junior High School
- DAGA** 26. Daga High School 27. Drujeygang Junior High School
- WANGDUE** 28. Wangdue Junior High School 29. Gaselo Junior High School 30. Bajo High School 31. Phobjikha Primary School
- TSERANG** 32. Damphu High School 33. Damphu Primary School
- SARPANG** 34. Sarpang Junior High School 35. Gelephu High School



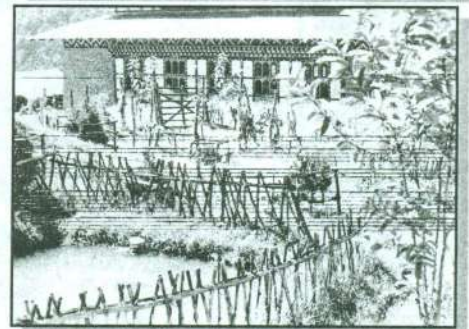
0 25 50 km
Dist. of Survey & Land Record, 2000

Legend 36-65

- TRONGSA** 36. Trongsa High School 37. Langthel Junior High School
- BUMTHANG** 38. Jakar High School
- ZHEMGANG** 39. Zhemgang High School 40. Panbang Junior High School 41. Pantang Junior High School 42. Dongdongbi Community School 43. Tingtibi Primary School 44. Yebilaptsa Junior High School 45. Gomphu Primary School 46. Goshing Primary School
- LHUNTSE** 47. Tangmachhu High School 48. Khoma Primary School
- MONGAR** 49. Gyelpozhing High School 50. Mongar High School 65. Ngatshang Primary School
- PEMAGATSHEL** 51. Nangkhor Junior High School 52. Pemagatshel Junior High School
- SAMDRUP JONGKHAR** 53. Nganglam Junior High School 54. Nganglam High School 55. Norbugang Primary School 56. Samdrup Jongkhar Junior High School
- TRASHIYANGTSE** 57. Trashiyangtse High School 58. Tshenkarla Junior High School
- TRASHIGANG** 59. Sherubtse College 60. Trashigang Junior High School 61. Rangjung Junior High School 62. Khaling High School 63. Wamrong Junior High School 64. Radhi Junior High School

Nature Club Activities

- ✦ School Waste Management Program (construction of waste pits, providing bins for class rooms, collection of bottles and plastics for reuse and recycling).
- ✦ Environmental News Bulletin Board (members update information weekly)
- ✦ Plantation
- ✦ School Nature Garden
- ✦ Cleaning Campaigns
- ✦ Quiz & debate on environmental themes
- ✦ Talk on environment issue/conservation by NC members in school morning assembly
- ✦ Observance of world environment events- world environment day, International Birdwatching day
- ✦ Skits/dramas during local festivals on environmental themes-eg. Water pollution and its impact on human and environmental health, impact of population on environmental and quality of life
- ✦ Organize short treks to local monasteries and biodiversity sites
- ✦ Annual Nature Club Exhibition to exhibit their activities and spread awareness among the local community on environment issues.



Nature Club Reports

Besides their regular activities, here are reports of some additional activities carried out by some nature clubs that have been selected randomly:

🌲 Changangkha JHS, Thimphu

- ◆ On 5th April, we conducted an Essay Writing Competition. From each section, two participants were invited and a total of thirty students took part. Two divisions were made: seniors with the topic "Importance of Environment Conservation" and Juniors with "Forest-Home for the Wild." Different English teachers of this school evaluated essays.
- ◆ An exhibition on different aspects of Nature was organized by the school on the following themes:
 - Save environment
 - Love Nature
 - Bird watching
 - Reuse and Recycle
 - Save soil erosion
 - Save energy

Along with the exhibition, members raised some fund through games and food stalls. We were able to generate profit of Nu.1400/-. This money will be used for the prizes for different competitions which will be organized this year.



🌲 Tshenkarla Junior High School, Trashiyangtse

- ◆ Nature Garden Development in wasteland
- ◆ Plantation in local landslide areas

🌲 Wamrong Junior High School, Trashigang

- ◆ A fuelwood consumption survey was carried out by nature club students in the nearby village of Kharpu.

Survey Results

1. Number of households: 25
2. Domestic animals: Horse, cattle, hens, pigs
3. Main crops: maize & potato
4. Fuel used for cooking: All the household used wood for cooking purposes. Kerosene was used only for starting the fire. No one used Cooking gas.

According to the villagers, they had to pay royalty to the forest department for cutting down trees for fuel wood. The villagers are also quite concerned about their forest and have done some champ, chirpine and cypress plantation on their own.

- ◆ Visit to Guwahati Zoo, Assam, India
In order to familiarize the children about animals they only get to read about, the students were taken for a visit to the Guwahati Zoo in Assam, India.

🌲 Tangmachhu High School, Lhuentse

- ◆ Takila Lakgang Restoration/White washing plantation
- ◆ Nature Trek to Khoma chhu



🌲 Jigme Sherubling High School, Khaling, Trashigang

As part of the observation of Earth Day (23rd April 2000), the members and the staff of Dzarogdongchen Club (Environment Club) organized a "Silent Walking Campaign" to make the local community aware of different environment issues.

In spite of a dull and gloomy weather, the participants cheerfully participated in the walk from the Khaling Market to Local Hydel Station and back to School Gate via BHU. All members walked silently and carried written messages at the backs and some of them were holding placards in their hands related to environment subjects.

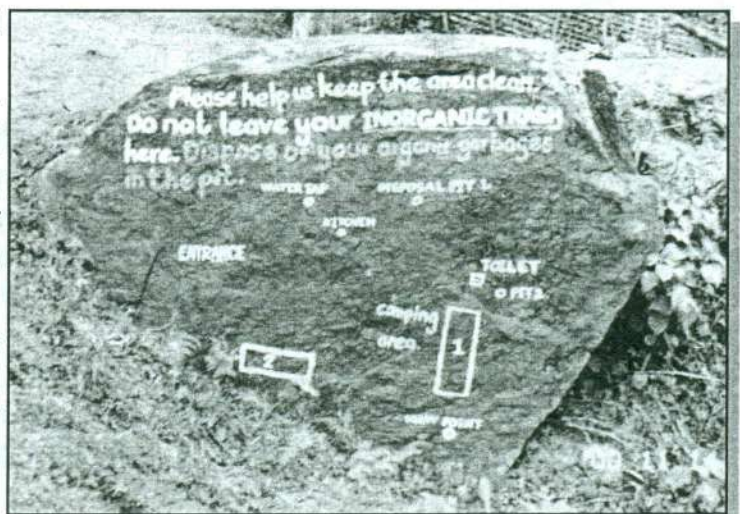
The objective of our program was to incite curiosity among the people through our silence and hence spread awareness in a more effective way in the locality regarding our dependence to the environment and the need for preservation of different environmental and natural resources

🌲 Nature Club Action Grant- Damji Community Primary School, Gasa

The Nature Club of Damji Community School under the guidance of the Head Teacher Mr. Karma Geyleg undertook a Nature Club Action Grant Project from July 1999 involving water pollution survey of the streams along the Tashithang – Damji road and development of a campsite for the benefit of regular travellers and tourists.

The Environment Education Officer visited Damji to assess the project. The following is his report: As proposed the school has initiated two activities. In the first activity the school has collected water sample from the numerous streams along the Tashithang – Damji road and tested the water samples at the general hospital in Punakha to check the FC content.

Having the water samples tested, the school has written the test results on rocks near each stream informing travellers on the quality of water and whether it is safe for drinking. Messages are



written in both English and Dzongkha for the convenience of the people. Some of the messages are as follows

- FC contents 9, Low health risk.
- Water contaminated, do not drink.
- FC contents 12, High health risk.
- Waste not, want not
- Do not litter.



In the second activity, the school has developed a campsite for regular travelers and tourists. Damji being the half way point to Gasa, many people halt at Damji. Initially people camped wherever they wished, polluting the area badly. With the development of this new campsite, travellers can now camp in one place with water, toilet and waste pit facilities. The campsite is well fenced and trees have been planted. Birds feeding tables have also been erected to attract birds. Therefore the new campsite is not only convenient for travelers but campers will actually enjoy their halt there.



◆ Red Panda Festival



A Red Panda Festival was organized for the first time in Bhutan by Damji Community Primary School and Goenshari Primary Community School (Punakha) with assistance from Jigme Dorji National Park on 10th, 11th and 12th Nov. 1999. The objective of the festival was to increase and spread awareness of the elusive Red Panda *Ailurus Fulgens* (Dz. Achu Dongkar). Though the trek to the probable red panda habitats yielded no sightings, the participants learnt a lot about the habitat and behaviour of the animal.



Annual EE Programs

🌲 BEST NATURE CLUB 1999

At the end of every year, activities of all Nature Clubs are evaluated and an award given to the best nature club. This award was instituted with an objective of motivating the students and rewarding them for their diligence and hard work in conservation.

Gelephu High School bagged the best nature club of 1999. As an award, RSPN organised an environmental camp for 30 students and 2 teachers at Kamechu, Wangdue Phodrang from 1-7 February 2000. The camp provided an opportunity for the students to learn about the environment but also have fun while doing it. During the camp, through lectures, videos, simulation games, fieldtrips, debate, quiz, group activities students learnt about emerging environmental problems, birds, plants, animals, ecological concepts, and environmental projects in action at Samtengang Lake and Tserang. They also visited some important cultural

Gelephu High School students at the Camp



sites. Further, they acquired basic skills to carry out simple research activities within their locality.

🌲 ANNAUL NATURE CLUB COORDINATORS WORKSHOP

The aim of this annual workshop is to enhance the knowledge of nature club coordinators (Teacher) in environment issues, natural environment, environment education and provide necessary skills in promoting EE. The workshop also provides an opportunity for nature clubs teachers to share their ideas and views on conservation as well as the constraints they face while carrying out activities. The nature club action plan for the following year is also drafted during this time.

Workshop participants during one of the field trips



This year the Annual Nature Club Coordinators workshop was organized at Kamechu, Wangdue Phodrang from 23-30 January 2000. Out of 25 teachers nominated, 18 of them attended the workshop. The sessions were held through lectures, video, discussions, simulation games, group activities and outdoor activities. In order to make the workshop more interesting and activity oriented, a number of tours were organized. Phobjikha Valley was chosen as one of the tour

interesting and activity oriented, a number of tours were organized. Phobjikha Valley was chosen as one of the tour destinations so that the participants could observe the harmony in which the Black Necked Cranes and local communities live in the area. A talk was given by the Field Officer of RSPN on the Integrated Black Necked Crane Conservation & Development Program initiated in the valley by the Society last year. He highlighted the various types of crane conservation activities as well as programs to enhance the economic standards of the local community under the program. The participants then walked through the nature trail recently developed to observe the cranes. They saw 238 cranes out of which 32 were juveniles.

The participants also trekked to Samtengang Lake to see the lake restoration works initiated by National Environment Commission through the Capacity 21 Project. This trip demonstrated to the participants how local belief and religion enable people to conserve the environment.

Samtengang Lake



The last trip was to the recently inaugurated Khamsum Yuelay Namgyal Temple. Since the temple is quite unique and rare in Bhutan, the participants were spiritually happy and grateful for the opportunity.

Resource Persons for the Workshop included personnel from National Environment Commission, Nature Conservation Division, Jigme Dorji National Park and RSPN.

ENVIRONMENT EDUCATION WORKSHOP

A workshop was organized by the Education Division, RGOB at Khuruthang, Punakha from 8th-22nd Jan 2000 to train school teachers in successfully infusing environment education in the school curriculum. Officials from RSPN participated in the workshop as resource persons.

REGULAR EE PORGRAMS IN INSTITUTIONS

- ◆ Teachers Training College, Paro
- ◆ Bhutan Forestry Institute, Taba, Thimphu
- ◆ National Resource Training Institute, Lobesa
- ◆ National Institute of Education, Samtse

EE session at NRTI, Lobesa



Environment Education- Non Formal Sector

Though RSPN presently does not have the capacity to cover environment education for the non-formal sector, we have been able to facilitate a couple of EE programs for the non-formal sector organized by WWF Bhutan and Tourism Authority of Bhutan.

🌲 ISSUE IDENTIFICATION WORKSHOP

WWF Bhutan organized an Issue Identification Workshop on 17th and 18th Nov. '99 at Thimphu. With an aim to form a base to develop environment education in the non-formal sector, representatives from the Monk Body, Royal Bhutan Police, Volunteer Artist Studio Thimphu, Bhutan Chamber of Commerce and Industries, Thimphu City Corporation and Local Handicraft emporiums were invited to attend the 2 day workshop. The proceedings were coordinated by the WWF Program and communications officers with the RSPN EE coordinator as the resource person.

The major environmental hazards, emerging environment issues of Bhutan & world, extinction of animal species, sewerage problems, waste disposal, water pollution, role of youth in conserving the environment, strengthening the role of major groups in sustainable development, rural urban migration.

🌲 TOURIST GUIDES GET THE GREEN EDGE

RSPN facilitated a 2 day course on environment for tourist guides on 28th July and 8th August 1999. Organized by the Tourism Authority of Bhutan (TAB), the sessions focused on the present and emerging environmental issues in Bhutan and the world in general. A special mention was made on the negative and positive impact of the tourism industry on a country's environment and culture. The participants were also made through practical examples about an individual's direct or indirect influence on the environment.

PROJECT DONORS

\$ UNICEF

\$ Keidanren Nature Conservation Fund (KNCF, Japan)

\$ WWF



ADVOCACY PROGRAMS

🌲 POST PLASTIC BAN SURVEY

The use of plastic bags was officially banned in the Kingdom by the Royal Government on 2nd June 1999. But has the ban been really effective? Are the people aware why plastic bags were banned?

A small-scale survey has been initiated by RSPN and Tim Bodt, a Dutch student volunteer to find out. The survey which started in the last week of June is scheduled to be completed and documented in the next fiscal year.

🌲 CLEANING CAMPAIGNS

Though a lot of regular cleaning campaign had been taking place in other dzongkhags though RSPN nature clubs, it had been quite a few years since RSPN conducted organized cleaning campaigns in Thimphu.

DRUK NATURE CLUB, THIMPHU

The summer of 2000 saw a series of cleaning campaign jointly organized by the Druk Nature Club comprising RSPN staff, Volunteer Artist Studio Thimphu and local volunteers. The cleaning campaigns were concentrated mostly in areas outside the City Corporations jurisdiction so as to complement their efforts.

Some of the areas covered:

- ◆ Sangaygang area above radio tower: Cleaning of the area as well as emptying of garbage pits with help of City Corporation.
- ◆ Changangkha Monastery: Local volunteers, Changangkha JHS students, VAST students and RSPN
- ◆ Nature trails in & around Thimphu
- ◆ Jungzhina: Year 2000 graduates, Local Volunteers and RSPN
- ◆ Kabesa Chhorten Restoration: VAST and RSPN
- ◆ Dechenphug Monastery (twice): Local volunteers and RSPN
- ◆ Phajoding, Dochula, Talakha Goenpa, Drole Goenpa and Telecom Tower Nature Trails – local volunteers & RSPN
- ◆ Chagri Monastery Base – Local volunteers & RSPN

Sangaygang Cleaning campaign



RSPN SUPPORT GROUP, BUMTHANG

The Dhur Hot spring is considered to be one of the best hot springs in the country. There are about six big hot springs and several smaller one which are visited by people from all over for treatment of various diseases. Due to the large number of visitors every year, the surrounding areas have become very dirty with garbage littered all around. Furthermore there are no proper toilet facilities in the area.

The RSPN Support Group of Bumthang organized an 8 day trek to the Dhur Hot Spring in October 1999. The participants included support group members and the students of Jakar High School and Wangdichholing Junior High School.

Objective of the program:

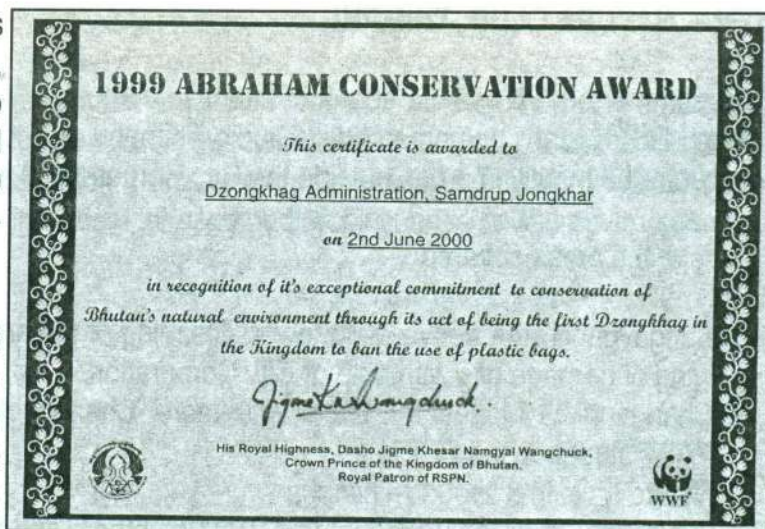
- ◆ To study the local biodiversity and to collect plant specimens for development of a School Herbarium.
- ◆ Clean the trail and surrounding areas leading to the Dhur Hot Springs and construct waste and toilet pits for visitors.

🌲 ABRAHAM CONSERVATION AWARD

In 1998, WWF Bhutan and RSPN joined hands to recognize grass root level conservation efforts by initiating the Abraham Conservation Award in Bhutan. This awards scheme was sponsored by Ms. Nancy Abraham. During a visit to Nepal, she was deeply moved by a touching incident. A lowly paid forester had saved the life of a baby rhinoceros apparently gored by a tiger, by utilizing his own meager earnings for its medical treatment. The Abraham Conservation Award thus grants rewards and gives recognition to such special individuals and groups committed to conservation.

This year the coveted award was presented to the Dzongkhag Administration, Samdrup Jongkhar by His Excellency Dasho Nado Rinchen, Deputy Minister, National Environment Commission on 2nd June 2000 at a ceremony in the Banquet Hall in Thimphu.

The award was given in recognition of it being the first Dzongkhag in Bhutan to ban the use and sale of thin plastic bags which has an adverse effect to the environment due to its non-biodegradable nature. This action by the Dzongkhag acted as a precursor to the Nationwide ban on the use and sale of thin plastic bags.





Integrated Conservation and Development Program

In 1999 RSPN initiated the Integrated Black Necked Crane Conservation and Development Program (ICDP) at Phobjikha, the biggest wintering site for the Black Necked Cranes in Bhutan.

Funded by GEF/SGP, SPIEC and WWF Bhutan, the Project, which focuses on biodiversity conservation as well as economic enhancement of the local community of Phobjikha, is expected to be a model from which lessons can be learnt for replication in other areas in the Kingdom. It is expected to have global environment benefits, particularly as Bhutan is one of the ten global hotspots for biodiversity conservation, through habitat conservation of the cranes, sustainable use of biological resources and use of renewable energy which mitigates climate change.



GOALS

- 🌲 Promote positive attitudes towards the conservation of the Black Necked Cranes
- 🌲 Encourage and instill in the public a sense of respect for social, cultural, natural and religious values of the area and to pursue active participation towards retaining this heritage.
- 🌲 Provide alternative economic opportunities to the local community in order to promote the economic well being of the community
- 🌲 Develop Phobjikha into a model eco-tourism destination
- 🌲 Enable self sustainability of the *Phobjikha Conservation Area Program Committee

COMPONENTS UNDER THE PROGRAM

- 🌲 Community Organization
 - Phobjikha Conservation Area Program (PCAP) Committee
 - Women in Environment
 - Annual Black Necked Crane Festival
- 🌲 Ecotourism
 - Nature Trails
 - Accommodation Development
 - Crane Observation & Education Center construction
 - Photographic Hide construction
 - Development of Cultural and Nature tours
 - Ecotourism management plan for Phobjikha

- ✦ Alternative Energy
- ✦ Conservation Programs
 - Environment Education
 - Community School/Non-formal education center
 - Development of management plan for wetland conservation and community development
- ✦ Agriculture Development
- ✦ Infrastructure Development
 - Road
 - Telecommunication
- ✦ Human Resource Development
- ✦ Black Necked Crane Monitoring and Research

Accomplishments 99-2000

✦ PCAP COMMITTEE

The Phobjikha Conservation Area Program (PCAP) Committee is a committee represented by people from the local community and various government units like the Basic Health Unit, Black Mountain National Park etc. The committee meets quarterly and plays an active role in major decision making and project implementation. Six PCAP meetings were held in this fiscal year for issues ranging from the women's weaving program, construction of the observation/education center, alternative energy, human resource development and the 2nd black necked crane festival. In the long run, the PCAP committee is expected to take over full responsibility of the ICDP Program with RSPN just as an observer.

✦ WEAVING PROGRAM

The objective of the Women in Environment sub-component is to build the capacity of women to carry out eco-friendly income generating activities. With funding from WWF-Bhutan, a Weaving Program was initiated in June 99 (FY 98-99). Two weaving teachers were hired to train twenty six women from different geogs in Phobjikha. Loans were made available to the participants from a revolving fund to meet initiation costs for the venture.



The first batch of weaver have completed their training and have started producing quality woven material for kira, table cloth, rachu, mufflers, decoration pieces etc. The 2nd Black Necked Crane Festival proved be a good avenue for marketing the products. They have been able to pay back 50% of the loan till date.

The amount received will once again be rolled back into the revolving fund for the credit service to be made available to the next batch of entrepreneurs of Phobjikha.



Constraints of the Weaving Program:

One of the major constraints faced by the weavers is the lack of a proper marketing strategy for their products. Though RSPN is helping in marketing their products in Thimphu, they have to compete with well organized business establishments in the country. The Annual Crane Festival still remains the only reliable avenue for selling their items.

🌲 CONSTRUCTION OF OBSERVATION CUM EDUCATION CENTER

With a grant of Nu. 10.54 Lakhs (Nu. 1.5 million) from GEF/SGP and additional fund of US\$15000 being provided by SPIEC (Society for Promotion of Intercultural Education for Children), Japan, the construction of the Observation cum Education center started in the second week of April 1999.

The multipurpose Center, located above the main road to Tabithang, will greatly reduce disturbance to the Black Necked Cranes as compared to the present temporary observation hide which lies very close to the crane habitat.

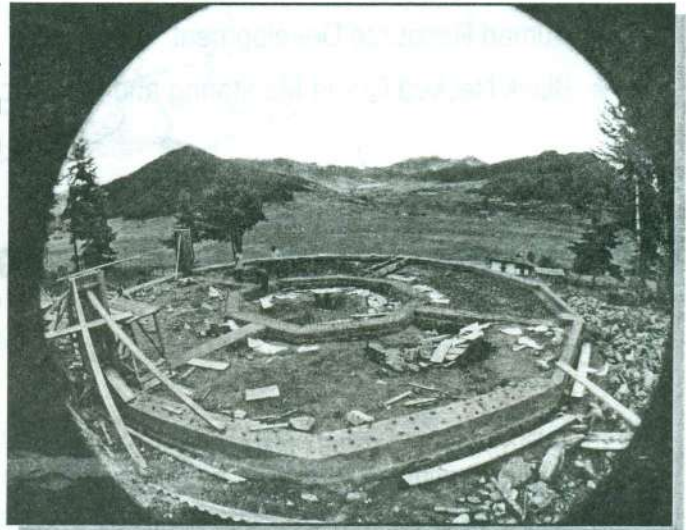
The Center will serve the following purposes:

- ◆ Crane Observation center with equipments such as binoculars, spotting scopes, telescopes, night vision scopes, cameras, video etc.
- ◆ An environment interpretation center to educate visitors / tourists on the significance of the Black Necked Cranes, their habitat and relationship with the local people and brief them on the Dos and Don'ts while touring the valley; Education center for students.
- ◆ A model house with alternative energy devices, energy & water saving devices for the local community to replicate.
- ◆ A base for operating Eco-tours in the valley. Center facilities will also be made to private tour operators for a fee the proceeds of which will go towards maintenance of the center.
- ◆ Facilitate Research work pertaining to the Black Necked Cranes; Office and living quarters of the RSPN Field Officer.
- ◆ Nature shop to promote sale of local handicrafts

The Center is scheduled to be completed by November 2000 (Fiscal year 2000-2001).

Additional funds for equipping the center have been proposed to Japan Fund for Global Environment (JFGE) and the International Crane Foundation.

Observation Center at Phobjikha under construction



🌲 ECOTOURISM

Under the Ecotourism component, an Ecotourism workshop was organized in Thimphu on 14th Dec. 1999. The main objectives of the workshop were:

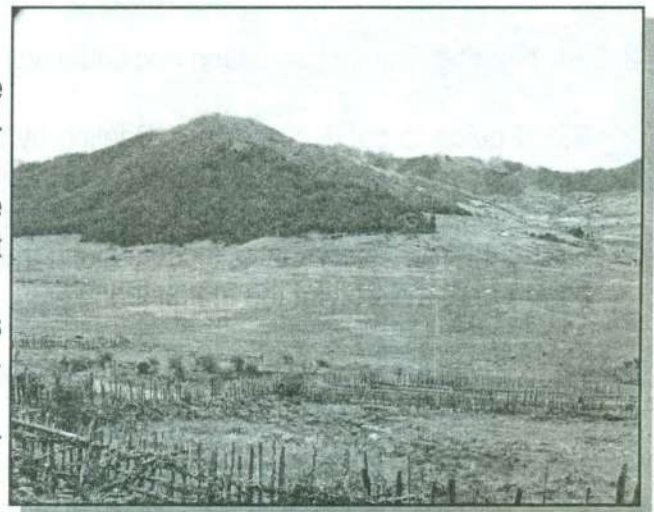
- ◆ Promote the awareness in participants about the concept of ICDP;
- ◆ To identify potentials, constraints and solutions to develop Phobjikha Eco-tourism management plan for Phobjikha and
- ◆ To formulate and adopt Phobjikha Eco-tourism declaration.

Representatives from the Tourism Authority of Bhutan, National Environment Commission, Jigme Dorji National Park, Black Mountain National Park, Bhutan Trust Fund for Environment Conservation, UNDP-GEF/SGP, Education Division, Save the Children, HELVETAS, WWF Bhutan, PCAP Committee and fourteen private tour operators participated in the one day workshop.

The workshop concluded with the drafting of the Phobjikha Ecotourism Declaration.

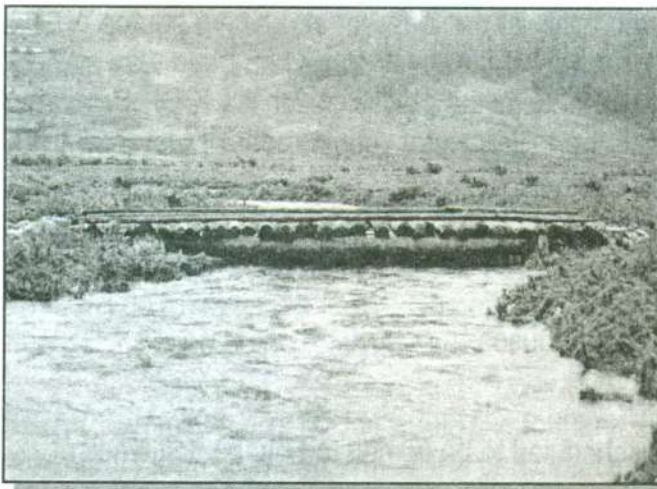
Phobjikha Eco-tourism Declaration:

- ◆ Every tourist group/ visitor shall first visit the Crane Observation and Education Centre before conducting any tour in the valley.
- ◆ Every visitor/ tourists group to the valley shall use trained guides well versed with local environment and culture and traditions.
- ◆ While in the valley, visitors shall abide by the dos and don'ts listed at the Crane Observation and education centre.
- ◆ Anyone found violating the rules will be liable for penalty/ fines as per existing TAB rules.



Rules and Regulations:

- ◆ Use of trails – visitors are required to follow the trails and not walk wherever they desire
 - ◆ Use of Camera – Camera with powerful flash is not to be used at night time as it is likely to disturb the cranes
 - ◆ Observation rule – Habitat Area
 - ◆ Use of torch light at night – One is required to keep the torch light pointed in front and on the road
 - ◆ Noise – Tourists and guides shall refrain from making loud noise when near the crane roost and the habitat and also please refrain from honking in the valley
- Visitors are not allowed to go around the valley without a trained guide



- ◆ Respect for local culture – Visitors are required to wear decent clothing, and have respect for Chhortens and flagpoles by keeping to its left.

Prototype Tour Program for Phobjikha

1. Visit to the Crane Observation and Education Centre: Activities within the Centre are
 - ◆ Slide show and talk on natural (Eco-system of the valley) and cultural environment (Migration of the Gangteps into the lower valley in winter, creating space for the cranes) of the valley
 - ◆ Talk on the Cranes, their migratory pattern, habitat, population
 - ◆ Talk on ICDP
 - ◆ Briefing on Dos and Don'ts while in the valley
 - ◆ Briefing on existing community lodges and other facilities available in the valley
 - ◆ Information on RSPN Photographic hide
 - ◆ Availability of observation facilities such as binoculars and telescopes to observe the bird in winter
 - ◆ Visit to the nature shop located within the Centre
 - ◆ Optional – visit to the coffee shop also located within the centre
 - ◆ Video show on various natural and cultural aspects of the valley
2. Early morning Crane observation and counting/ Crane study using nature trails:
 - ◆ RSPN guide to conduct the tour. Briefing by the guide on the landscape, history of the Chhorten on view, cranes, their roosting habit, feeding habit and their territorial and behavior in general. Identification of cranes, their gender, age (adult/juvenile) will also be briefed on.
 - ◆ Visit to the monastery that is located along the trail that is used for crane counting. Visitors will also be briefed on the history of the monastery
3. Visit to the Nature club of the primary school and observe the nature club activities
4. Visit to the carpet factory
5. Visit to Gangtey Goenpa
6. Trekking – Phobjikha – Gogona – Khotokha
 - ◆ Phobjikha – Tshelela (Bird Watching) – Gogona – Phobjikha

ALTERNATIVE ENERGY

To familiarize the local community with the importance and utility of the different alternative source of energy and technology for mitigating negative environment impacts, a feasibility study has been started in May 2000 for the installation of Peltric Sets (PICO Hydro) at selected places under the ICDP Program. The peltric set is a small device generating electricity with the falling water requirement of just 3-25 LPS and can generate power from 1-5KW of energy.

The places identified for the pilot installation are:

- ◆ Gangtey Monastery, Kuenzang Chholing Sherda
- ◆ Gogona Khechin Chholing Monastery and surrounding houses
- ◆ RSPN Observation & Education Center
- ◆

Installation of the peltric units in all the identified areas is scheduled to be completed by the first week of February 2001. (Next Fiscal Year 2000-2001).

2nd ANNAUL BLACK NECKED CRANE FESTIVAL 1999

The Annual Black Necked Crane Festival is organized every year on 12th Nov. coinciding with the birth anniversary celebration of His Majesty the King. Organized by the PCAP Committee and RSPN, it is one of the avenues which provide an alternative method of income without degrading the natural flora and fauna and also help in promoting the conservation of the cranes.

Following the tradition started at the first crane festival in 1998, the early hour of the festival day saw visitors and guests being taken to the crane hide near the roosting area to observe and count the cranes.



The 2nd Black Necked Crane Festival was graced by His Excellency Dasho Nado Rinchen, Deputy Minister, National Environment Commission as the Chief Guest. In his inaugural speech, His Excellency laid emphasis on Bhutan's 'Middle Path' development strategy and the need to take extra efforts to stay on this path, specially with the onset of the new millennium. He said that this would also be in keeping with the Buddhist philosophy of living in harmony with nature. In addition to the cultural program organized by the students of Phobjikha Primary School and the local community, a welcome addition to the festival was the introduction of games, art exhibition and food stall to raise funds for the community.

As mentioned earlier, it also proved to be an opportunity for the women under the Weaving Program to display their products such as s kira pieces, table cloth, mats, rachus, decoration pieces etc. for sale.

Every game stall was based on an environmental theme such as proper waste disposal, pollution, biodiversity conservation etc.

In the evening a video show was organized for the local community and a bonfire for guests and visitors.

Quite a substantial amount was raised from the festival with donations from the National Environment Commission, Guests from the International Crane Foundation and visitors. This will go towards the PCAP Committee fund for sustaining the organization of the festival.

PCAP Committee and RSPN would like to thank the local volunteers from Thimphu and all the participants for their generous donations and participation.



Traditional Marchhang ceremony before the festival



March past- Students of Phobjikha Primary School



Mask Dance by local community

🌲 Group Management & Training Workshop

Under the Human Resource Development Component, a Group Management & Training Workshop was organized for PCAP Committee members on the last week of June 1999. Funded by GEF/SGP, the workshop was facilitated by RSPN with resource persons from the Royal Institute of Management (RIM), Bhutan Development Finance Corporation and the Environment Education Unit of RSPN.

The group management sessions coordinated by RIM were very interactive and kept the participants attentive and responsive. Games and skits were organized between lectures where they had to think and come up with solutions and suggestions on problems and issues discussed. A session on basic book-keeping was also given jointly by RIM and BDFC. Various types of rural credit schemes available, ways of saving costs and methods of investment was also made known to the participants. The concluding sessions of the workshop was dedicated to environment education. The members were invited to participate in environmental games between lectures to give them some basic facts about the environment and the emerging problems in Bhutan.



In the feedback session at the end of the workshop, the participants thought the sessions were practical and would be very useful to them in everyday life. They were quite impressed with the resource persons and expressed their gratitude for organizing such a workshop for their benefit.

🌲 BAMBOO PLANTATION



Under the Conservation component, a demonstration on bamboo plantation techniques was given to the local people of Phobjikha on 31st March 2000 by the RSPN ecologist. They were briefed on the technique, appropriate time and the multipurpose use of bamboos which would not only act as a natural fence but would also be used for domestic purposes. The plantation program in Phobjikha, especially around the Black Necked Crane Roosting Area, funded by the Society for Promoting Intercultural Education for Children (SPIEC, Japan), is still under study to assess whether it would bring a drastic change to the habitat which might even prevent cranes from visiting the area.

🌲 ICDP Phobjikha — MIDTERM ASSESSMENT

In the last week of June a mid-term assessment of the Project was conducted by GEF/SGP.

Expected Results of the project:

- ◆ Community managed Ecotourism in Phobjikha
- ◆ Facilities created to encourage eco-tourism
- ◆ Community economically benefiting from Ecotourism
- ◆ Decreased disturbance to the cranes by visitors
- ◆ Habitat conservation of the cranes
- ◆ Sustainable use of biological resources
- ◆ Use of renewable energy

Achievements:

- ◆ Community managed Ecotourism in Phobjikha

As the project is still ongoing, this objective has not been fully realized. However, the PCAP Committee is actively involved in the decision making process and are participating in the activities carried out in the implementation of the project.

- ◆ Facilities created to encourage eco-tourism

Black Necked Crane Festival being organized every year on 12th No. Nature trails and bridges have been built. A weaving center has been created to attract tourists and generate income. A crane observation and education center is under construction and is scheduled to be completed by November 2000.

- ◆ Community economically benefiting from Ecotourism

The communities are earning from porting ponies, sale of handicrafts, cheese, butter, meat and donations from visitors.

- ◆ Decreased disturbance to the cranes by visitors

Nature trails and bridges have been built around the crane roosting area for people to walk around without disturbing the cranes. Traditional fencing with bamboo mats, wood and plantation as opposed to barbed wire is being continued. Visitors have been greatly controlled in going too close to the crane roosting area with constant monitoring and controlling by the PCAP Committee. The implementation of the Ecotourism Management Plan will further decrease disturbance to the cranes.

- ◆ Habitat conservation of the cranes

Private land within the crane habitat have been relocated. Bamboo cultivation has been carried out with funding from SPIEC, Japan. A proposal is also being developed by the PCAP committee and RSPN for external funds to relocate the Phobjikha Primary School which at present is located quite close to the Crane habitat.

- ◆ Sustainable use of biological resources

Initiation of locally managed ecotourism will contribute to sustainable use of biological resources.

- ◆ Use of renewable energy

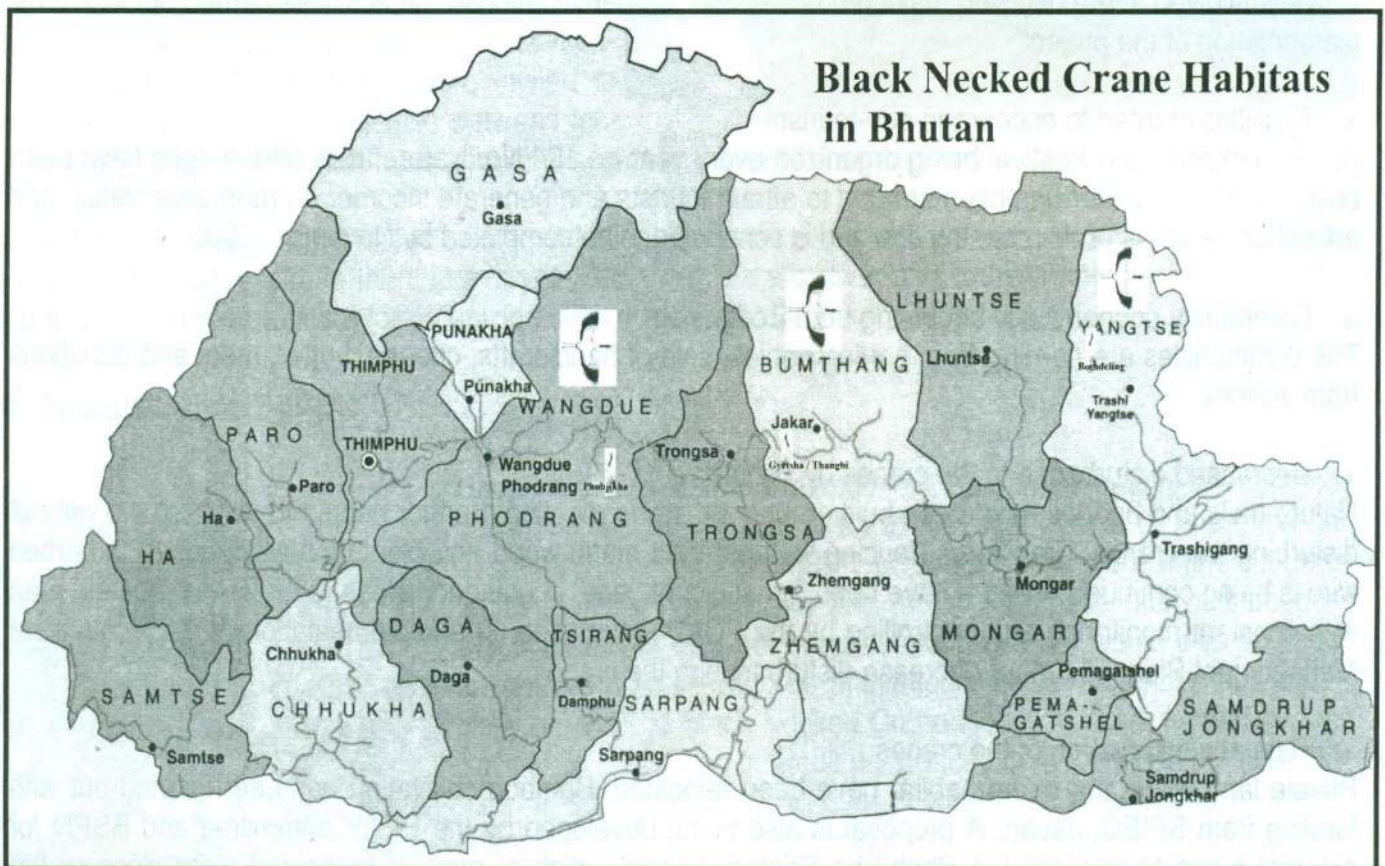
Not yet implemented. Still under process. Feasibility study for installation of Peltric set (PICO Mini Hydro) being done.

Constraints faced in implementation:

- ◆ Lack of communication facilities
- ◆ Limitation of funds
- ◆ Low Literacy level among the local community

🌲 BLACK NECKED CRANE RESEARCH AND MONITORING

RSPN started its conservation venture with the monitoring and counting of the Black Necked Cranes *Grus nigricollis* (DZ: *Thrung Thrung Karmo*) and it remains to be one of its activities. Every year, after the annual crane festival, a research tour is conducted covering all Black Necked Crane habitats in the country viz. Phobjikha, (Gyetsha, Thangbi, Kuruk, Choekor) Bumthang and Bomdeling.



This year the research tour was conducted by a team comprising Jim Rogers (International Crane Foundation), Sherub (Nature Conservation Division, RGOB) and Dago Tshering, Field Officer, RSPN. Three hundred twenty seven black necked cranes were counted during the tour this year inclusive of forty three juveniles. The recruitment of juveniles was 13.1%.

Phobjikha Wetland Habitat (Altitude- 2800 m): The wetland of Phobjikha valley formed by a receding glacier is the largest wintering site for the *Thrung Thrungs* in Bhutan. Phobjikha is fed by thousands of spring sources and is the single largest natural wetland in the Kingdom for the 'winged winter visitors' from Tibet. On 23rd Oct 1999, the first family of three cranes flew to Phobjikha Valley. Two of the three were juveniles. The cranes in Phobjikha forage in open fallows, dwarf bamboo patches, farmlands and marshes. Their dietary composition varies in summer and winter. In winter they feed on sedge, tubers, dropout grains, germinating wheat and barley and even on slugs and snails, grub, worms and insects and large quantities of pebble (quartz).



Bumthang (Altitude- 2800-3000 m): Once upon a time a white bird flew to a mound in Bumthang where the present Dzong was being constructed. Hence the Dzong was named Jakar (Dz. White bird) Dzong. The 'white bird' was actually a Black Necked Crane. According to the local people, the valleys of Bumthang viz Chamkhar, Dhur, Thangbi-Choekor and Gyetsha used to host a few hundreds of these cranes. This year a total of 10 cranes were observed- 5 at Gyetsha (a pair and a widow at Kuruk and a pair at Gyetsha proper) and 5 at Thangbi-Choekor. The Black Necked Cranes in Bumthang feed mostly in the farmlands and open fallow. But the roosting area of these cranes is still unknown though some villagers from Thangbi have opined that they have seen the cranes roosting in a small marsh land at Singye Tshars opposite to Kharsa/Thangbi.



Azha Nyima The Dead Crane

A week before the research team reached Bumthang, a Forestry Official found an injured male crane there. His mate waited patiently by his side. But after sometime, the female crane abandoned him and flew away. Seeing its hopeless state, the forestry official carried him to the Veterinary Hospital in Bumthang for treatment. But nothing could be done to save him and they buried him. It was then that the research team reached Bumthang and helped in excavating the carcass for post mortem. The dead crane was brought to Thimphu where after post mortem was confirmed that the crane had succumbed due to some inflicted injuries. The 6th, 7th and 8th ribs on the right side as well as the acetabulum socket had been fractured.

Bomdeling/Trashiyangtse (Altitude : 1900-2300 m) : Bomdeling is the second largest crane habitat in Bhutan. Situated in the Eastern most part of the country, it lies at a much lower altitude as compared to other crane habitats. The vegetation comprises cool broad leafed forests. For the last nine years, less than 200 cranes have been coming here every winter. On their visit to Bomdeling in the first week of December, The team counted 73 cranes. Cranes visiting Bomdeling are on a gradual decline owing to disturbances caused by flash floods of Kulong Chhu and smaller streams in the roost and feeding areas. Dolingju, one of the main roosts, has now been ruined by a flash flood during the monsoons.



Foraging areas in Bomdeling is very different from the wetlands of Phobjikha, comprising mostly dry paddy terraces on either side of the Kulong Chhu. Feeding areas of the cranes extend to Zaphang (north extreme) to Chhorten Kora (South extreme) from Dolingju and Womenang, a side east valley.

Black Necked Crane Count Winter 1999-2000

- ◆ Phobjikha — 244
- ◆ Bomdeling — 155
- ◆ Bumthang — 10

Winter	Phobjikha	Bomdeling	Khotokha	Bumthang	Total
1990-91	111	152	10	12	285
1991-92	102	139	6	8	255
1992-93	175	175	16	8	374
1993-94	195	203	7	?	405+
1994-95	208	177	16	23	424
1995-96	212	144	13	16	385
1996-97	223	136	7	14	379
1997-98	219	181	8	15	423
1998-99	240+	146	7	18	411+
1999-2000	244	155	6	10	415

Project Donors

- ✿ GEF Small Grants Program
- ✿ Society for Promoting Intercultural Education for Children (SPIEC, Japan)
- ✿ WWF
- ✿ International Crane Foundation
- ✿ Japan Fund for Global Environment



Fundraising and Membership Program

One of the major goals of RSPN is to become self-sustainable in the long run. Though major conservation programs will still be funded by donor organizations, it is imperative that the Society generate its own fund to at least cover its operational costs. Therefore with technical assistance from WWF- UK , a Fundraising strategy was drafted and implemented for an RSPN Endowment Fund .

Endowment Fund Target: US\$ 1 Million



Fundraising for Endowment Fund

WHY US\$ 1 Million?

- ◆ Institutional Support from the Bhutan Trust Fund for Environment Conservation ends by June 2003
- ◆ Need for sustainable alternative
- ◆ Financial Analysis (Year 2003 to 2008)

Items	2003-2004	2004 - 2005	2005 - 2006	2006 - 2007	2007 -2008
Staff Salaries/Benefits	2636987.582	2900686.34	3190754.97	3509830.471	3860813.519
Office Supplies	110624.8	121687.28	133856.008	147241.6088	161965.7697
Maintenance of Office	110624.8	121687.28	133856.008	147241.6088	161965.7697
Travel/Training	506660	557326	613058.6	674364.46	741800.906
Vehicle Maintenance	188062.6	206868.86	227555.746	250311.3206	275342.4527
Telephone/Fax/Internet	221249.6	243374.56	267712.016	294483.2176	323931.5394
Publicity	221249.6	243374.56	267712.016	294483.2176	323931.5394
Workshops	189750	208725	229597.5	252557.25	277812.975
TOTAL (Nu.)	4185208.98	4603729.88	5064102.87	5570513.15	6127564.47
TOTAL (US \$)	95118.39	104630.22	115093.25	126602.57	139262.83

- ◆ Projected Annual Fund requirement = Nu. 5,110,223.87 OR US \$ 116,141.45
- ◆ Investment, Returns and Supplement

Reinvest 5 Percent / Annual Investment and Supplement Required					
	2003- 2004	2004 - 2005	2005 - 2006	2006 - 2007	2007 -2008
Annual Capital	1000000.00	1004000.00	1008016.00	1012048.06	1016096.26
Annual Interest	80000.00	80320.00	80641.28	80963.85	81287.70
Av. Budget (after 5% ded.)	76000.00	76304.00	76609.22	76915.65	77223.32
Budget Requirement	95118.39	104630.22	115093.25	126602.57	139262.83
Supplement Required	19118.39	28326.22	38484.03	49686.92	62039.51

Supplement Fund: To be met through Operational/ Management Cost Charges (about 10%)

Assumed: Constant interest rate of 8%

Fund Management

- ◆ Investment Options
 - In Local Banks - Bhutan National Bank
 - Tie up with Bhutan Trust Fund for Environment Conservation
- ◆ Annual Fund Allocation
 - RSPN Board of Directors.



EXISTING FUNDRAISING PROGRAMS

- ◆ Consultancy services for other organizations and Agencies.
 - Services of RSPN Ecologist/Ornithologist
 - Services of the Environment Education Unit

No.	Month	Work Description	Date	
1.	July- August 1999	Environment Education Training Program for Tourist Guides	28th July, 8th August	Tourism Authority of Bhutan
2.		Plant Identification Training for RNRRC Staff, Bumthang	1st—5th July	CORET, Austrian Training Project
3.	September	Ecological Survey for Punatsangchu Power Project	6th—12th Sept.	WAPCOS, India
4.	October— November—December	Biodiversity survey & Data Compilation for Bomdeling Wildlife Sanctuary II	14th—20th Oct. 1st—30th Nov.	NIRAS, Den Consultancy
5.		Resource Person for EE Workshop for Non Formal Sector	17th-18th Nov.	WWF Bhutan
6.		Biodiversity survey & Data Compilation for Bomdeling Wildlife Sanctuary III	12th—23rd Dec.	NIRAS, Den Consultancy
7.	January 2000	Resource Persons for EE workshop	8-30th Jan. 2000	CAPPS, Education Division, RGOB
	April	Biodiversity Survey for Thrumshingla National Park I	23rd-30th April	WWF Bhutan
	May	Biodiversity Survey for Thrumshingla National Park II	3rd-25th May	

- ◆ Solicitation of Contributions from Individuals and members
- ◆ Monthly fundraising events: food fare/musical shows/dance parties/fetes

Amount Raised till Date: US\$ 38,000/-

FUNDRAISING PLAN FOR NEXT FISCAL YEAR

- ◆ Local Fundraising
 - ⇒ Installation of spare currency collection unit at Paro Airport
 - ⇒ Solicit contributions from Business companies, Tour companies, Organizations, Trust Funds Company Partners in Conservation
 - ⇒ RSPN hosted dinner/event for potential local donor
 - ⇒ Written Proposals
 - ⇒ RSPN Nature Shop
 - ⇒ Continuation of ongoing activities



- ◆ Overseas Fundraising
 - ⇒ Solicit Funds for Endowment
 - ⇒ Compilation of potential donor database
 - ⇒ Establish links to Donors/Organizations/Trusts
 - ⇒ Written Proposals

CONSTRAINTS

- ◆ Scarce Donors for Endowments/ Trusts
- ◆ Limited number of Local Donors

RSPN Membership Program

From this year, the RSPN Membership Program will play an integral part of fundraising for the Endowment Fund. A new membership strategy has been implemented from Jan 2000 which would cover operational costs incurred for sustaining the program as well as contribute towards the endowment fund. But the student membership fee is still Nu. 10/year as the membership program for students is targeted more on awareness than on fundraising.

	Member Category	Membership Fees	Total No. of members as of July 2000
1	Student	Nu. 10/year or Nu. 40/5 years	2700
2	Individual (Bhutanese/ Expatriates, SAARC Countries)	Nu. 200/year or Nu. 800/5 years	120
3	Foreign	US\$50/Year or US\$ 200/5 years (or Nu. Equivalent)	50
4	Guardians	US\$ 500 above/year	5
Total No. of members			2875

RSPN GUARDIANS

- ◆ Ms. Sabine Liebherr, Germany
- ◆ Ms. Judith Brown, USA
- ◆ Ms. Vicki Sant, USA
- ◆ Mr. William Tacon, UK
- ◆ Mr. Paul King & Ms. Gail Murray, UK



ADHOC PROGRAMS

Japan Bhutan Friendship Cherry Plantation Program

Year 2000 marked the twentieth anniversary of the Japan Bhutan Friendship Association (JBFA). To mark this special occasion as well as further strengthen the bond of friendship between the two countries, a Japan Bhutan friendship Cherry plantation program was organized in Thimphu by RSPN in collaboration with the Thimphu City Corporation and the Royal Government. The day chosen was 2nd June 2000, special to all Bhutanese as the 26th Coronation Anniversary of His Majesty the King and observed throughout the country as Social Forestry Day. Twenty delegates from Japan including Honourable JBFA Chairman Mr. Eijiro Noda, the ex-ambassador of Japan to India-Bhutan participated in the program. Delegates from the Royal Government, JBFA, International Organizations, RSPN Volunteers and students planted approximately 180 cherry saplings of the species *Prunus sargentii* and *Prunus Laansenia* in the Banquet Hall garden, Memorial Chhorten, Children's park and along Norzin and Desi Lam. The Program was sponsored by Society for Promoting Intercultural Education for Children (SPIEC, Japan).



International Volunteers Day (IVD)

On 5th Dec. '99, volunteer organizations all over the world celebrated the International Volunteer Day. Co-ordinated by UNV, the objective of IVD is to promote the spirit of volunteerism.

In Bhutan, it was the first time that national volunteers participated in the event. RSPN being one of the main national NGO facilitating volunteer activities, participated in the event along with VAST, RSPCA, SMILE, JICA/JOCV, VSA/VSO, and UNV. On 4th Dec., the volunteers scrubbed and washed the parking area wall (opp. clock tower) in Thimphu.

On 5th Dec., an exhibition was held at the clock tower by all the participating organizations. Inaugurated by HRH The Queen Ashi Tshering Yangden Wangchuck and Mr. Shun-Ichi Murata, the Resident Representative of UNDP, each organization displayed collages and paintings of their activities and handed out information pamphlets to visitors. Free health counseling were given to the public by UNV doctors. RSPCA and the Thimphu Veterinary Hospital also gave counseling to all pet owners about proper animal care. RSPN gave a brief overview to all visitors to the exhibition about the Integrated Conservation & Development Program at Phobjikha as well as about proper waste disposal through paintings and photographs.

RSPN OFFICE

NEW EXECUTIVE DIRECTOR

The Executive Director of RSPN, Dr. Kinley Dorji, ended his contract on October 1999. Dr. Kinley Dorji joined the Society on 2nd October 1997 and served for two years as the Executive Director of RSPN. With his dedication and commitment, he guided RSPN through one of the roughest phases in its history and moulded it into the credible organization that it is today. It was during his tenure that BTFEC agreed to grant institutional support to RSPN for a period of five years (1998-2003). In addition, the status of RSPN was greatly ameliorated when HRH the Crowned Prince, DASHO JIGME KHE SAR NAMGYAL WANGCHUCK granted his royal consent to become the patron of the Society.

He has been succeeded by Mr. Lam Dorji as the new head of RSPN.

STAFF RECRUITMENT

In this fiscal year, the staff strength was enhanced with the recruitment of five new people:

- Jigme Tobgay, Conservation and Development Unit.
- Dago Tshering, Field officer, Phobjikha.
- Ugyen Lhendup, Environment Education Unit.
- Tshering Lham, Fund raising and Publicity Unit.
- Miraj Pradhan, Fundraising and Publicity Unit.

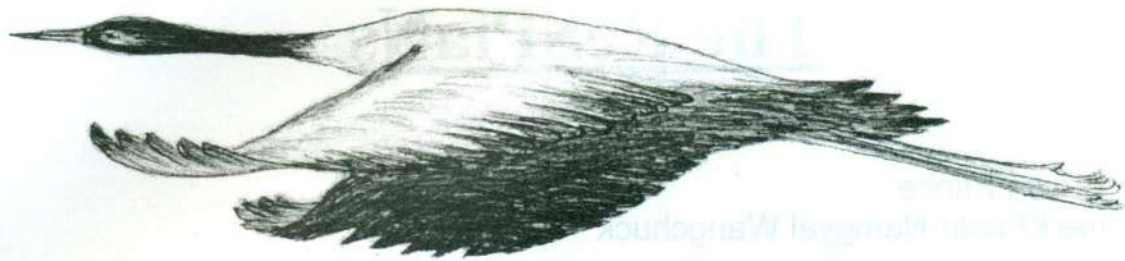
OFFICE AUTOMATION

Under the Institutional Support from the Bhutan Trust Fund for Environment Conservation, RSPN was able to procure additional office equipment viz.

- ⇒ Flatbed Scanner
- ⇒ LaserJet Color Printer
- ⇒ Overhead Projector
- ⇒ Projection Screen
- ⇒ Computers – Desktops (3) / Laptops (2)
- ⇒ LCD Projector
- ⇒ Binoculars
- ⇒ Public Addressing System
- ⇒ Video Camera
- ⇒ Digital Camera

This has not only enhanced smoother functioning of the office but has proved to be a great boon to our conservation education activities.





Wind Beneath Our Wings

Royal Government of Bhutan

Ministry of Finance— Office Block

Royal Audit Authority—Annual Audit

BTFEC— Institutional Support

UNICEF— Environment Education Program

WWF— Environment Education Program, ICDP- Phobjikha

KNCF— Environment Education Program

GEF Small Grants Program (UNDP)— ICDP- Phobjikha

SPIEC— ICDP, Phobjikha

ICF — ICDP, Phobjikha

JFGE—Observation Center, ICDP, Phobjikha

MacArthur Foundation - Discovery Initiatives - SNV - HELVETAS - Save the Children - NHK TV (Japan) - JBFA - JICA/JOCV - International Snow Leopard Trust - America Bhutan Friendship Council Royal Institute of Management - Department of Forest - Nature Conservation Division - National Environment Commission - IECH - Civil Aviation - CAPSS - Education Division - Dzongkhag Administration (Wangdue) - Department of Tourism - National Parks - Thimphu City Corporation - Voluntary Artist Studio Thimphu - Bhutan Heritage Travels - BBS - Kuensel - Norbu Rabten Press

RSPN Guardians - Members - Nature Club Students - Local Volunteers - Support Groups

We would also like to express our gratitude to many individuals, national and international, for their belief and support in our conservation endeavours.



The ReSPiAns

Patron

HRH The Crown Prince
Dasho Jigme Khesar Namgyal Wangchuck

Board Members

Dasho Sangay Thinley	President (Secretary, Ministry of Agriculture)
Aum Dago Bida	Vice President (Etho Metho Tours & Travels)
Mr. Chador Wangdi	Member (Non-formal Education Unit, RGOB)
Mr. Kinley Dorji	Member (Managing Director, Kuensel)
Mr. Namgyal Lhendup	Member (Planning Commission, RGOB)
Mr. Phuntsho	Member (PPD, Special Commission)
Mr. Tashi Tshering	Member (National Environment Commission)
Mr. Tandin Dorji	Member (National Environment Commission)
Mr. Karma Tshiteem	Member (NBACD, RGOB)
Mr. Lam Dorji	Member Secretary

Staff Members

Mr. Lam Dorji, Executive Director

Environment Education Unit

Mr. Mincha Wangdi, Ms. Rebecca Pradhan, Mr. Ugyen Lhendup

Conservation & Development Unit

Mr. Jigme Tobgay, Mr. Dago Tshering

Fundraising & Publicity Unit

Ms. Tshering Lham, Mr. Miraj Pradhan

Administration & Finance Unit

Mr. Karma Loday, Ms. Karma Delma, Ms. Damche Dema, Mr. Chenning Dorji

Volunteers

Mr. Paul King, Ms. Gail Murray, Mr. Sonam Jamtsho, Ms. Tshering Dolma,
Mr. Chewang Norbu



FINANCIAL REPORT



ROYAL SOCIETY FOR THE PROTECTION OF NATURE
THIMPHU : BHUTAN

TRIAL BALANCE AS ON 30.06.2000

PROJECTS/ CHARGEABLE HEADS	RECEIPTS		EXPENSES		BALANCE	
	(Nu.)	(US\$)	(Nu.)	(US\$)	(Nu.)	(US\$)
Institutional Support-BTF	2,675,185.87		2,054,429.78		620,756.09	0.00
Conservation Education- WWF	222,489.00		501,289.00		-278,800.00	0.00
Conservation Education- (KNCF)	397,953.88		397,953.88		0.00	0.00
Conservation Education UNICEF	138,689.00		138,689.00		0.00	0.00
Women in Environment	225,536.00		67,325.00		158,211.00	0.00
ICDP Phobjikha	1,796,191.35		795,016.29		1,001,175.06	0.00
HRD & Recurrent Costs Development-BTF	2,286,587.00		1,891,694.35		394,892.65	0.00
Water pollution project-UNICEF	100,394.10		57,938.00		42,456.10	0.00
BNC festival	218,986.40		131,143.00		87,843.40	0.00
SPEIC Japan	550,264.51	20,000.00	76,370.00		473,894.51	20,000.00
Donation	6,000.00		6,000.00		0.00	0.00
Others	2,005,093.66	7,526.19	45,552.50		1,959,541.16	7,526.19
Contingency	53,957.08	19.90	53,957.08		0.00	19.90
Income from conservation education	25,241.43		25,241.43		0.00	0.00
Vehicle hire income	8,800.00		8,800.00		0.00	0.00
Investment			3,000,000.00		-3,000,000.00	0.00
Equipment hire income	61,799.68		61,799.68		0.00	0.00
International volunteers day	1,600.00		1,600.00		0.00	0.00
CD# 1822		11,393.17	-		0.00	11,393.17
FC# 158			480,593.20		-480,593.20	0.00
Construction- Security deposit	12,720.00				12,720.00	0.00
Suspense			47,641.84		-47,641.84	0.00
Advance			328,550.76		-328,550.76	0.00
Cash			73,490.09	214.00	-73,490.09	-214.00
Bank			542,414.16	38,725.26	-542,414.16	-38,725.26
TOTAL	10,787,489.96	38,939.26	10,787,489.96	38,939.26	0.00	0.00



Executive Director
Royal Society for Protection of Nature
Thimphu



Auditor
Royal Audit Authority
Thimphu



**ROYAL SOCIETY FOR PROTECTION OF NATURE
THIMPHU : BHUTAN**

EXPENSES STATEMENT FOR THE PERIOD ENDED ON 30 JUNE 2000

S/No.	Particulars	EXPENSES (Nu.)
I	INSTITUTIONAL SUPPORT	
	Pay & Allowances	1,496,981.00
	Provident Fund	77,009.00
	Office Supplies	56,519.00
	Office Maintenance	57,500.00
	Travel/Training	9,350.00
	Maintenance of Vehicle	97,750.00
	Publicity	112,054.60
	Telephone/Fax	52,270.75
	Vehicle	86,840.43
	Office furniture	8,155.00
		2,054,429.78
II	CONSERVATION EDUCATION	
	Subscription to Environmental Magazine	40,250.00
	Distribution of Resources	20,000.00
	Art/Essay Competition	21,446.00
	Best Nature Club Award	7,762.83
	Support visits by RSPN staff	82,107.00
	EE Training program for Institutes- NIE	8,200.00
	EE Training program for Institutes- NRTI	6,150.00
	Workshops/Conferences- 3 regional workshops	61,500.00
	Publications- Directory of Nature Clubs	19,196.00
	Publications- Nature Club Handbook	8,600.17
	Publications- News letter	103,077.00
	Project Management costs- Env. Edn. Officer	123,000.00
		501,289.00
III	CONSERVATION EDUCATION	
	Support to School Nature Clubs- Administrative fund	81,900.00
	Support to School Nature Clubs- Cupboards	126,000.00
	Support to School Nature Clubs- Public Awareness Display	42,000.00
	Support to School Nature Clubs- Equipment	105,000.00
	Project Management costs- Project Evaluation & Monitorin	7,600.00
	Project management costs- Project Administrative costs	35,453.88
		397,953.88
IV	CONSERVATION EDUCATION	
	Support to School Nature Clubs- Nature Club Action Grant	56,689.00
	Workshops/Conferences- Student field trip to NSC	82,000.00
		138,689.00
V	WOMEN IN ENVIRONMENT	
	Recruitment of weavers	3,500.00
	Salary for trainers	57,000.00
	Operational Costs	6,825.00
		67,325.00
VI	ICDP PHOBIKHA	
	Eco-Tourism Workshop	56,604.00
	Document printing	4,000.00
	ICDP survey	72,241.09
	Committee expenses	4,461.00
	Management Documents	3,684.00
	Construction centre - Timber	252,640.00
	Construction centre - Advertisement	4,356.00
	Construction centre- Sachoey	2,154.00
	Construction centre - Tools	6,699.00



**ROYAL SOCIETY FOR PROTECTION OF NATURE
THIMPHU : BHUTAN**

EXPENSES STATEMENT FOR THE PERIOD ENDED ON 30 JUNE 2000

	Construction centre - Bricks	33,600.00
	Construction centre - Transparent Sheet	14,731.20
	Construction centre - Labor	62,760.00
	Construction centre -Micse.	692.00
	Construction- Books	173.00
	Nature Trails	103,760.00
	Contingency - Transportation	63,001.00
	Contingency - Site Engineer's DSA	9,000.00
	Contingency- Field officer's DSA	43,920.00
	Contingency- Coordinators DSA	11,550.00
	Contingency- Driver's DSA	6,800.00
	Field Officer Salary	38,190.00
		795,016.29
VII	HRD & RECURRENT COSTS DEVELOPMENT	
	Computer & Accessories	783,142.35
	Video/Digital Cameras	191,034.55
	LCD/OHP/Slide Projectors	388,716.06
	Binders/Laminators	113,126.03
	Public Addressing System	49,379.60
	Binoculars	137,184.51
	Bank Transfer Charges	4,378.00
	Natural Resources Management	222,727.25
	Druk Air Cargo Handling charges	2,006.00
		1,891,694.35
VIII	WATER POLLUTION PROJECT	
	Refreshment	3,954.00
	Fund for the Schools	25,000.00
	DSA	16,500.00
		45,454.00
IX	ENVIRONMENT EDUCATION	
	Transport	8,634.00
	DSA/Honorarium	3,850.00
		12,484.00
X	BNC FESTIVAL	
	Food and Accommodation	20,349.00
	Tents	90,000.00
	1999 BNC festival reception	9,384.00
	Guest expenses	9,958.00
	Advertisement	1,452.00
		131,143.00
XI	PLANTATION & TOOLS PROCUREMENT	
	Bamboo sapling & nails	2,485.00
	Transportation- Plantation	9,898.00
		12,383.00
XII	INAUGURATION OF CHERRY TREE PLANTATION	
	Cargo- Cherry Tree	4,507.00
	Tools- Cherry Tree plantation	5,060.00
	Misce.- Cherry tree plantation	1,520.00
	Refreshment	21,557.00
	Sign Board	5,300.00
	Banner	4,310.00
	Photo printing	1,746.00
XIII	PHOBIKHA SCHOOL NATURE CLUB SUPPORT	
	Refreshment	19,987.00
		19,987.00

**ROYAL SOCIETY FOR PROTECTION OF NATURE
THIMPHU : BHUTAN**

EXPENSES STATEMENT FOR THE PERIOD ENDED ON 30 JUNE 2000

XIV	DONATION- DISCOVERY INITIATIVES	
	Salary- Crane Caretaker	6,000.00
		6,000.00
XV	OTHERS	
	BNC tour expenses	45,552.50
		45,552.50
XVI	CONTINGENCY	
	Books for Library	5,000.00
	Photocopy Spare parts	48,957.08
		53,957.08
XVII	CONSERVATION EDUCATION INCOME	
	Telephone/Fax	25,241.43
		25,241.43
XVIII	VEHICLE HIRE INCOME	
	Vehicle Hire- DSA	8,800.00
		8,800.00
XIX	EQUIPMENT HIRE INCOME	
	Computer Repairs	10,950.00
	Advertisement	2,530.00
	Photocopy Spare parts	48,319.68
		61,799.68
XX	ADVANCES	
	RSPN-RMNP	633.00
	Staff	31,143.76
	Fuel advance	5,357.00
	ICDP Tour advance	6,550.00
	Systimax advance	8,325.00
	Mad & Mild Hitches	10,550.00
	Thrumshingla tour advance	3,000.00
	Construction advance	3,470.00
	ICF Tibet tour advance	239,522.00
	Labor Contract advance	20,000.00
		328,550.76


 Executive Director
 Royal Society for Protection of Nature
 Thimphu

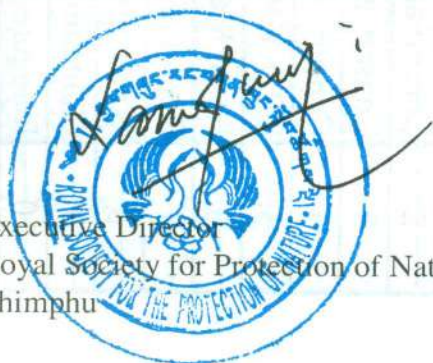

 Auditor
 Royal Audit Authority
 Thimphu



**ROYAL SOCIETY FOR THE PROTECTION OF NATURE
THIMPHU: BHUTAN**

CONTRIBUTION AND EXPENSES STATEMENT FOR THE PERIOD ENDED ON 30.6.2000

PROJECTS	SOURCES		EXPENSES		BALANCE	
	(Nu.)	(US\$)	Nu.	(US\$)	(Nu.)	(US\$)
Institutional Support	2,675,185.87	-	2,054,429.78		620,756.09	-
Conservation Education	222,489.00	-	501,289.00		(278,800.00)	-
Conservation Education	411,685.88	-	411,685.88		-	-
Conservation Education	213,680.00	-	213,680.00		-	-
Women in Environment	225,536.00	-	67,325.00		158,211.00	-
ICDP- Phobjikha	1,796,191.35	-	795,016.29		1,001,175.06	-
HRD/Recurrent Costs Dev.	2,286,587.00	-	1,891,694.35		394,892.65	-
Water Pollution Project	100,394.10	-	45,454.00		54,940.10	-
Environment Education	-	-	12,484.00		(12,484.00)	-
Black Necked Crane Festival	518,986.40	-	431,143.00		87,843.40	-
Phobjikha- Construction Center	-	15,000.00			-	15,000.00
Plantation & Tools Procurement	550,264.59	3,000.00	12,383.00		537,881.59	3,000.00
Cherry Tree Plantation	-	1,000.00	44,000.00		(44,000.00)	1,000.00
Phobjikha Nature Club Support	-	1,000.00	19,987.00		(19,987.00)	1,000.00
Donation- Discovery Initiatives	19,434.00	-	19,434.00		-	-
Donation- Sabine	-	1,000.00		1,000.00	-	-
Consultancy Fees	30,100.00	4,159.41	30,100.00	4,159.41	-	-
Reserve Fund	897,551.46	185.00	(580,235.88)	(5,159.41)	1,477,787.34	5,344.41
Gratuity Fund	203,244.00	-			203,244.00	-
Black Necked Crane tour	-	-	45,552.50		(45,552.50)	-
Membership Fees	33,995.00	2,181.78			33,995.00	2,181.78
Environment Education Program	28,874.37	-			28,874.37	-
Snow Leopard Poster (ISL)	84,234.86	-	84,234.86		-	-
Communication Fund	-	-	(84,234.86)		84,234.86	-
Conservation Education Income	149,695.31	-	149,695.31		-	-
Environment Education Fund		-	(90,000.00)		90,000.00	-
Contingency Fund	53,957.08	19.90	53,957.08		-	19.90
Vehicle Hire Income	178,132.60	-	178,132.60		-	-
Contingency- Vehicle	-	-	(69,332.60)		69,332.60	-
Equipment Hire Income	79,425.17	-	79,425.17		-	-
Contingency- Equipment		-	(17,625.49)		17,625.49	-
International Volunteer Day	2,125.00	-	2,125.00		-	-
Fixex Deposit	-	-			-	-
Interest	13,000.00	-	13,000.00		-	-
CD Account # 1822	-	11,393.17			-	11,393.17
FC Account # 158	-	-			-	-
Suspense	-	-			-	-
Construction- Security Deposit	12,720.00				12,720.00	-
Advances	-	-			-	-
Cash	-	-			-	-
Bank	-	-			-	-
TOTAL	10,787,489.04	38,939.26	6,314,798.99	-	4,472,690.05	38,939.26
				Cash in hand	73,490.00	214.00
				Balance at Bank	1,023,007.36	38,725.26
				Fixed deposit	3,000,000.00	-
				Advance Receivable	328,550.00	-
				Suspense	47,641.84	-
				Total	4,472,690.05	38,939.26


 Executive Director
 Royal Society for Protection of Nature
 Thimphu


 Auditor
 Royal Audit Authority
 Thimphu

ROYAL SOCIETY FOR THE PROTECTION OF NATURE

INCOME & EXPENSES STATEMENT FOR THE YEAR ENDED JUNE 30, 2000

S/no.	INCOME	As on June 30, 2000		As on June 30, 1999	
		(Nu.)	(US\$)	(Nu.)	(US\$)
1	Reserve Fund	1,477,787.34	5,344.41	1,145,290.46	185.00
2	Project Fund	8,422,165.16	20,000.00	7,409,735.25	8,400.10
3	Gratuity Fund	203,244.00	-	-	-
4	Membership Fees	33,995.00	2,181.78	-	-
5	Others	637,577.54	11,413.07	747,933.08	3,557.81
	TOTAL	10,774,769.04	38,939.26	9,302,958.79	12,142.91
	EXPENSES				
1	Institutional Support	2,054,429.78	-	3,570,962.88	2,300.00
2	Conservation Education(WWF)	501,289.00	-	251,739.05	-
3	Conservation Education(KNCF)	397,953.88	-	-	-
4	Conservation Education(UNICEF)	138,689.00	-	-	-
5	HRD & Recurrent costs Development	1,891,694.35	-	-	-
6	Royal Manas National Park Program	12,484.00	-	421,125.63	-
7	Keep Thimphu clean campaign	-	-	-	-
8	World Environment Day celebration	-	-	-	-
9	Plantations & Tools procurement(SPIEC)	12,383.00	-	-	-
10	Inauguration of cherry tree plantation	44,000.00	-	-	-
11	Phobjikha school Nature Club support	19,987.00	-	-	-
12	Women in Environment	67,325.00	-	253,464.00	-
13	Plastic waste collection	-	-	8,478.00	-
14	ICDP Phobjikha	795,016.29	-	14,220.00	-

15	Water Pollution Project(UNICEF)	45,454.00	-	-	-
16	Donation(discovery initiatives)	6,000.00	-	6,000.00	-
17	BNC festival 1999	131,143.00	-	301,052.60	-
18	BNC tour expenses	45,552.50	-	-	-
19	Supply of equipment to Env. Education	-	-	1,183,355.00	6,100.10
20	Reserve	-	-	254,739.00	-
21	Others	151,398.19	-	14,522.00	3,537.91
	TOTAL EXPENSES	6,314,798.99	-	6,279,658.16	11,938.01
	Balance for the year	4,459,970.05	-	3,023,300.63	204.90
	Deficit brought forward from the previous year	-	-	-	-
	TOTAL	10,774,769.04	-	9,302,958.79	12,142.91

Significant Accounting Policies

1. These accounts have been prepared on a cash basis.
2. Fixed Assets are not capitalized and are expensed.
3. Figures from previous year have been grouped wherever required.



ROYAL SOCIETY FOR THE PROTECTION OF NATURE

BALANCE SHEET AS ON 30 JUNE, 2000

SOURCES OF FUNDS	As on June 30, 2000		As on June 30, 1999	
	(Nu.)	(US \$)	(Nu.)	(US\$)
Reserve Fund	1,477,787.34	5,344.41	890,551.46	185.00
Project Fund	2,441,459.86	20,000.00	1,700,390.69	-
Graduity Fund	203,244.00	-	-	-
Membership Fees	33,995.00	2,181.78	-	-
Other Balance	316,203.85	11,413.07	432,358.48	19.90
TOTAL FUNDS	4,472,690.05	38,939.26	3,023,300.63	204.90
APPLICATION OF FUNDS				
Cash in hand	73,490.00	214.00	11,233.20	50.00
Balance with bank	1,023,007.36	38,725.26	2,829,336.35	154.90
Fixed deposits	3,000,000.00	-	-	-
Advance receivable	328,550.76	-	157,502.07	-
Suspense	47,641.84	-	25,229.01	-
	4,472,690.05	38,939.26	3,023,300.63	204.90
Less: Liabilities	-	-	-	-
NET CURRENT ASSETS	4,472,690.05	38,939.26	3,023,300.63	204.90

Executive Director
Royal Society for Protection of Nature
Thimphu



Auditor
Royal Audit Authority
Thimphu





**Royal Society for Protection of Nature,
Post Box 325, Thimphu, Bhutan
Tel: +975-2-326130 / 322056 Fax: +975-2-323189 Email: rspn@druknet.net.bt**

Printed at: KUENSEL Corporation Thimphu